

GAP SEVEN DEPARTURE

AL-375 (FAA)

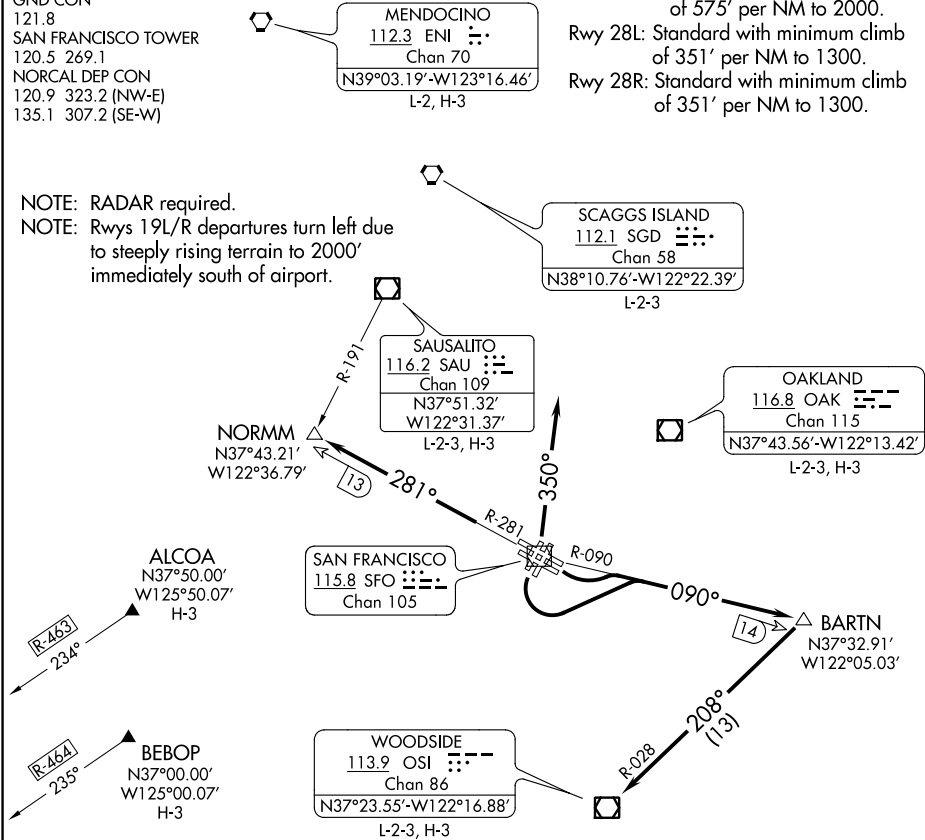
SAN FRANCISCO INTL (SFO)  
SAN FRANCISCO, CALIFORNIA

D-ATIS  
113.7 115.8 118.85  
CPDLC  
GND CON  
121.8  
SAN FRANCISCO TOWER  
120.5 269.1  
NORCAL DEP CON  
120.9 323.2 (NW-E)  
135.1 307.2 (SE-W)

TAKEOFF MINIMUMS

Rwy 19L/R: Standard with minimum climb  
of 575' per NM to 2000.  
Rwy 28L: Standard with minimum climb  
of 351' per NM to 1300.  
Rwy 28R: Standard with minimum climb  
of 351' per NM to 1300.

NOTE: RADAR required.  
NOTE: Rwy 19L/R departures turn left due  
to steeply rising terrain to 2000'  
immediately south of airport.



NOTE: Chart not to scale.

DEPARTURE ROUTE DESCRIPTION

TAKEOFF RUNWAYS 1L/R: Climb on SFO R-350 (or as assigned) for vectors  
to assigned route/fix. Thence . . . .

TAKEOFF RUNWAYS 10L/R and 19L/R: Turn left and climb on the SFO R-090 and  
OSI R-028 to OSI VOR/DME; expect vector to assigned route/fix after OSI VOR/DME.  
Thence . . . .

TAKEOFF RUNWAYS 28L/R: Climb on the SFO VOR/DME R-281 to NORMM INT/  
SFO VOR/DME 13 DME; expect vector to assigned route/fix after NORMM INT.  
Thence . . . .

. . . .expect further clearance to filed altitude 10 minutes after departure.

GAP SEVEN DEPARTURE