

WAAS CH 69513 W31A	APP CRS 312°	Rwy Idg 4825 TDZE 82 Apt Elev 85
--	------------------------	---

RNAV (GPS) Z RWY 31

SALINAS MUNI (SNS)

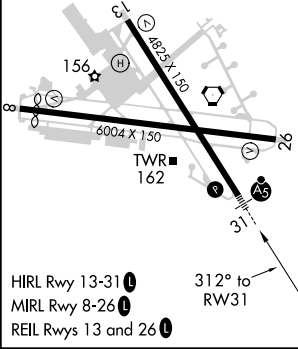
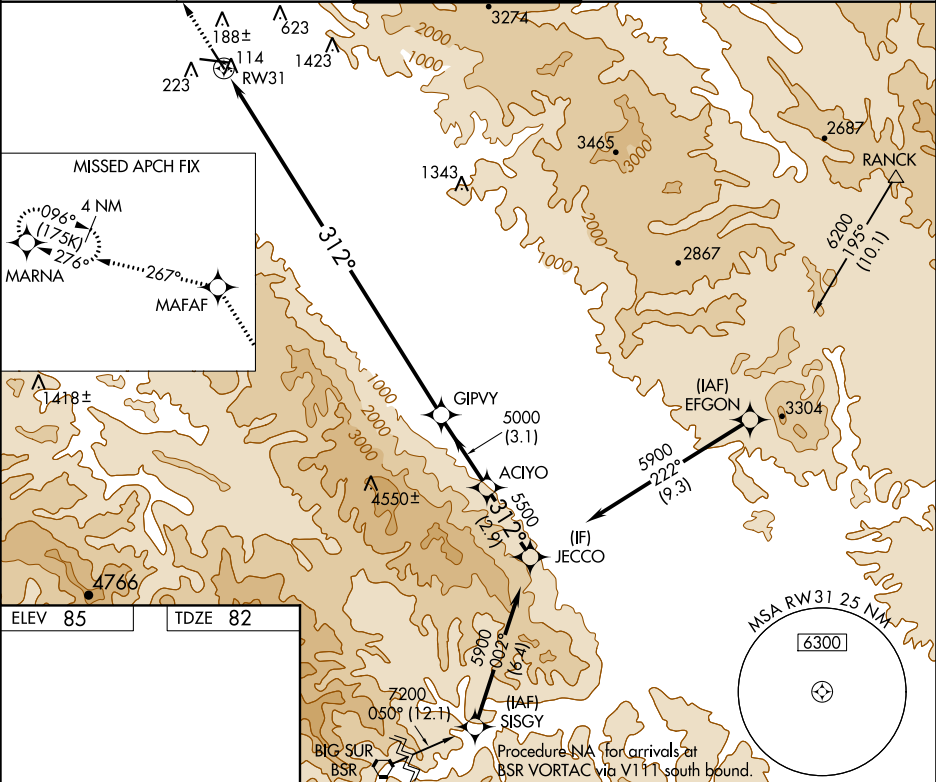
⚠

Baro-VNAV NA when using Monterey Rgnl altimeter setting. For uncompensated Baro-VNAV systems, LNAV/VNAV NA below -15°C (5°F) or above 50°C (122°F). DME/DME RNP-0.3 NA. When local altimeter setting not received, use Monterey Rgnl altimeter setting and increase all DA 53 feet and LNAV/VNAV all Cts visibility to RVR 5000.

MALSR

MISSED APPROACH: Climb to 3000 direct MAFAF and left turn via track 267° to MARNA and hold.

ATIS 124.85	NORCAL APP CON 133.0 251.15	SALINAS TOWER ★ 119.525 (CTAF) 239.3	GND CON 121.7	UNICOM 122.95
-----------------------	---------------------------------------	--	-------------------------	-------------------------



3000		MAFAF	MARNA	VGSi and RNAV glidepath not coincident (VGSi Angle 3.00°/TCH 61°).	
RW31		GIPVY		ACIYO	JECCO
		5000		5500	5900
		312°		Procedure Turn NA	
		14.7 NM		GP 3.00°	
		3.1 NM		TCH 50	
		2.9 NM			
CATEGORY	A	B	C	D	
LPV DA		282/24	200 (200-½)		
LNAV/VNAV DA		478/40	396 (400-¾)		