

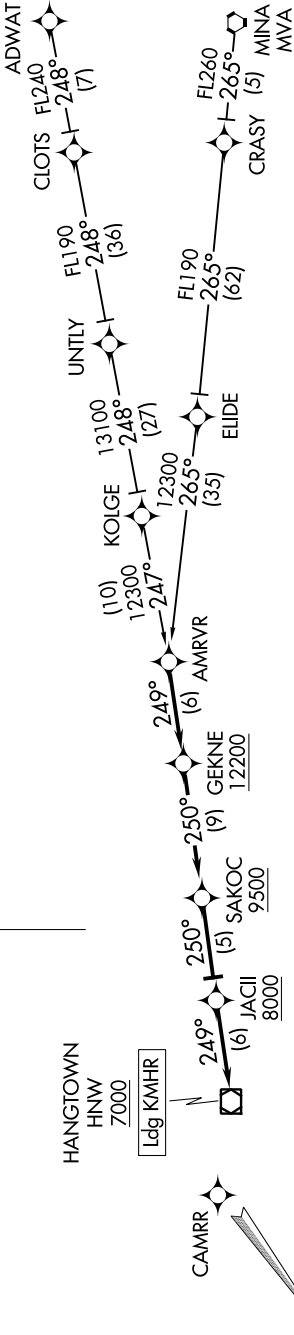
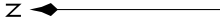
NORCAL APP CON  
127.4 317.5  
ATIS  
118.325  
MATHER TOWER ★  
120.65 282.25

(AMRV.R.AMVR2) 18256  
AMRV TWO ARRIVAL (RNAV)

AL-356 (FAA)

SACRAMENTO MATHER (MHR)  
SACRAMENTO, CALIFORNIA

NOTE: RNAV 1.  
NOTE: DME/DME/IRU or GPS required.  
NOTE: Turbojet aircraft only.  
NOTE: RADAR required for non-GPS equipped aircraft.



ARRIVAL ROUTE DESCRIPTION

ADWAT TRANSITION [ADWAT.AMVR2]

MINA TRANSITION [MVA.AMVR2]

... From AMRVR on track 249° to cross GEKNE at or above 12200, then on track 250° to cross SAKOC at or above 9500, then on track 250° to cross JACII at or above 8000, then on track 249° to cross HNW VOR/DME at or above 7000. Expect ILS approach Runway 22L or visual approach.

NOTE: Chart not to scale.