

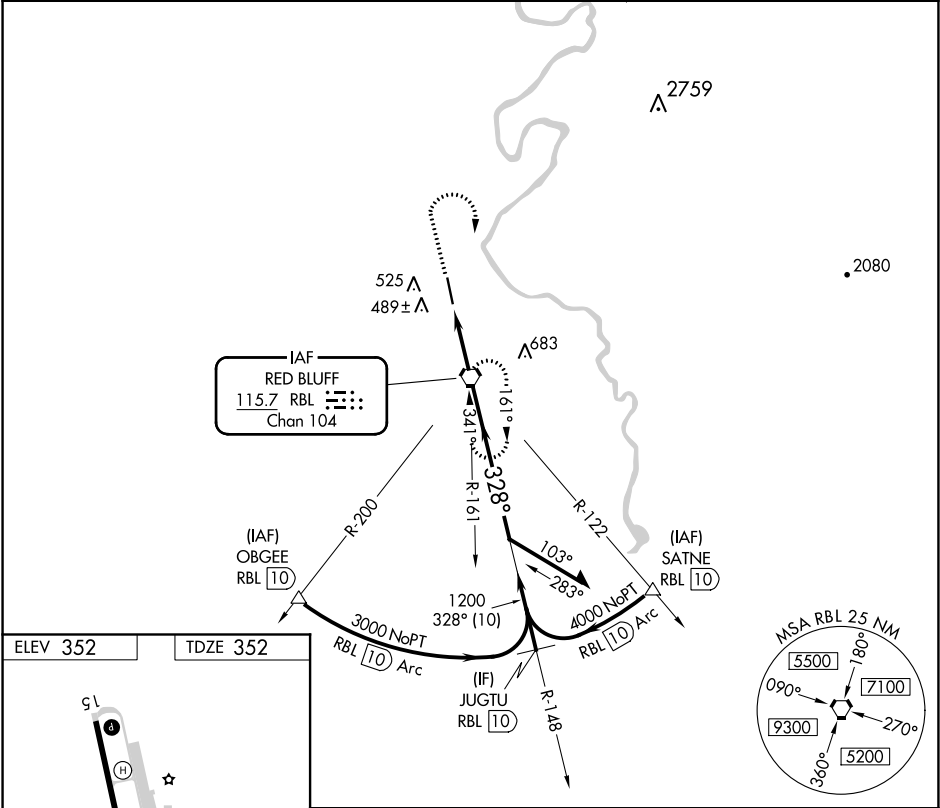
VORTAC RBL 115.7 Chan 104	APP CRS 328°	Rwy Idg TDZE 352 Apt Elev 352
---	------------------------	---

VOR RWY 33
RED BLUFF MUNI (RBL)

⚠ When local altimeter setting not received, use Redding altimeter setting and increase all MDAs 80 feet and all Cat C/D visibilities ¼ SM.

MISSED APPROACH: Climb to 1500, then climbing right turn to 2000 direct RBL VORTAC and hold.

ASOS 120.775	OAKLAND CENTER 132.2 350.3	UNICOM 123.0 (CTAF) 0
------------------------	--------------------------------------	---------------------------------



ELEV 352 TDZE 352

MIRL Rwy 15-33
REIL Rwys 15 and 33

FAF to MAP 2.7 NM

Knots	60	90	120	150	180
Min:Sec	2:42	1:48	1:21	1:05	0:54

1500 2000 RBL

RBL VORTAC 2300

Remain within 10 NM

148° 2100

328° 1200

2.83° TCH 40

2.7 NM

CATEGORY	A	B	C	D
S-33	740-1 388 (400-1)			740-1¼ 388 (400-1¼)
CIRCLING	880-1 528 (600-1)		900-1½ 548 (600-1½)	1060-2¼ 708 (800-2¼)

SW-2, 03 DEC 2020 to 31 DEC 2020

SW-2, 03 DEC 2020 to 31 DEC 2020