

LOC I-OAK	APP CRS	Rwy Idg	28R	28L
109.9	278°	TDZE	5458	6213
		Apt Elev	7	9

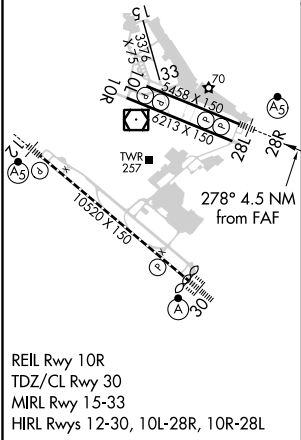
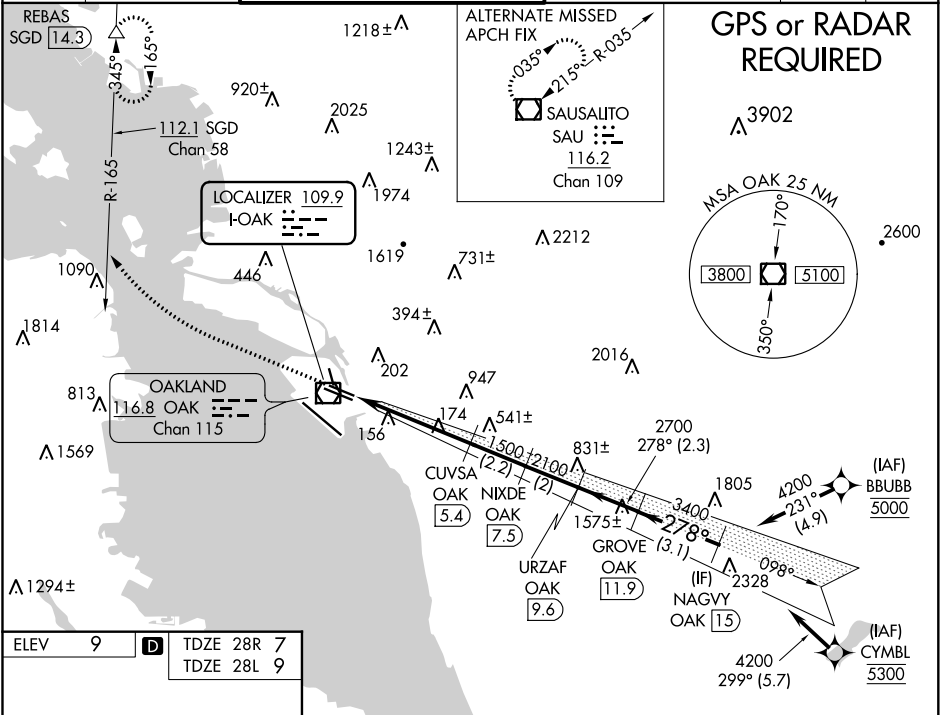
ILS or LOC/DME RWY 28R
METROPOLITAN OAKLAND INTL (OAK)

DME required. DME from OAK VOR/DME. Simultaneous reception of I-OAK and OAK DME required.
*RVR 1800 authorized with use of FD or AP or HUD to DA.

MALSR Rwy 28R

MISSED APPROACH: Climb to 1900 then climbing right turn to 3000 on heading 340° and SGD VORTAC R-165 to REBAS/SGD 14.3 DME and hold.

D-ATIS	NORCAL APP CON	OAKLAND TOWER	GND CON	CLNC DEL	CPDLC
133.775	125.35 263.15	118.3 291.65 (Rwys 10L/R-28L/R, 15-33) 127.2 256.9 (Rwy 12-30)	121.9 (Rwys 10L/R-28L/R, 15-33) 121.75 (Rwy 12-30)	121.1	



ELEV	9	TDZE 28R	7
		TDZE 28L	9
1900	3000	SGD R-165	REBAS
		hdg 340°	
		OAK 0.9	1500
		CUVSA OAK 5.4	2100
		NIXDE OAK 7.5	2700
		URZAF OAK 9.6	3400
		GROVE OAK 11.9	4200
		NAGVY OAK 15	4200
		GS 3.00°	TCH 53
		4.5 NM	2.2 NM
		2 NM	2.3 NM
		3.1 NM	
CATEGORY	A	B	C
*S-ILS 28R	207/24	200 (200-1/2)	
S-LOC 28R	440/24	433 (500-1/2)	
SIDESTEP 28L	440/55	431 (500-1)	440-1 1/2 431 (500-1 1/2)
CIRCLING	560-1	551 (600-1)	660-1 3/4 651 (700-1 3/4) 1400-3 1391 (1400-3)