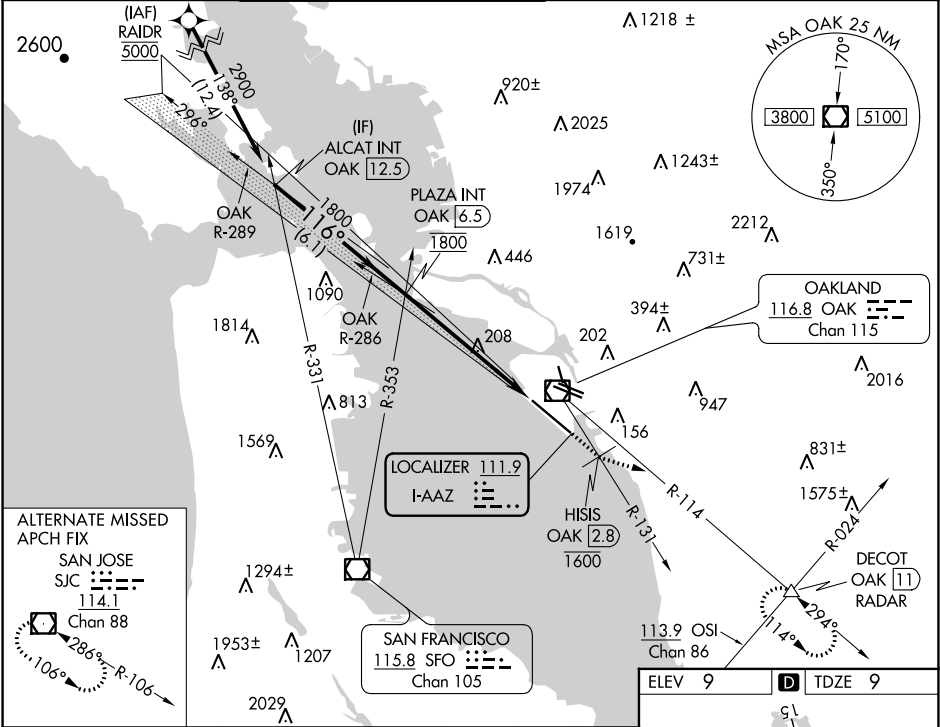


LOC I-AAZ 111.9	APP CRS 116°	Rwy Idg TDZE Apt Elev	10000 9 9
---------------------------	------------------------	-----------------------------	--------------------------------------

ILS or LOC RWY 12
METROPOLITAN OAKLAND INTL (OAK)

DME required. From RAIDR: RNAV 1-GPS required.	MALSR	MISSED APPROACH: Climb on heading 116° and on OAK VOR/DME R-131 to cross HISIS/OAK 2.8 DME at or below 1600 then climb to 5100 on heading 090° and on OAK VOR/DME R-114 to DECOT INT/ OAK 11 DME/RADAR and hold, continue climb-in-hold to 5100.
* RVR 1800 authorized with the use of FD or AP or HUD to DA.		

D-ATIS 133.775	NORCAL APP CON 125.35 263.15	OAKLAND TOWER 118.3 291.65 (Rwys 10L/R-28L/R, 15-33) 127.2 256.9 (Rwy 12-30)	GND CON 121.9 (Rwys 10L/R-28L/R, 15-33) 121.75 (Rwy 12-30)	CLNC DEL 121.1	CPDLC
--------------------------	--	--	--	--------------------------	-------



ALCAT INT OAK 12.5	hdg 116°	OAK R-131	HISIS OAK 2.8	5100	OAK R-114	DECOT
PLAZA INT OAK 6.5	VGS and ILS glidepath not coincident (VGS Angle 2.75/TCH 70).					
2900	116°	1800	1800			
GS 2.75° TCH 55	6.1 NM	6 NM				
CATEGORY	A	B	C	D		
S-ILS 12*	209/24		200 (200-½)			
S-LOC 12	460/24 451 (500-½)		460/45 451 (500-¾)			
CIRCLING	560-1 551 (600-1)		660-1¾ 651 (700-1¾)		1400-3 1391 (1400-3)	

REIL Rwy 10R	TDZ/CL Rwy 30	MIRL Rwy 15-33	HIRL Rwys 12-30, 10L-28R, 10R-28L
FAF to MAP 6 NM			
Knots	60	90	120 150 180
Min:Sec	6:00	4:00	3:00 2:24 2:00

SW-2, 03 DEC 2020 to 31 DEC 2020

SW-2, 03 DEC 2020 to 31 DEC 2020