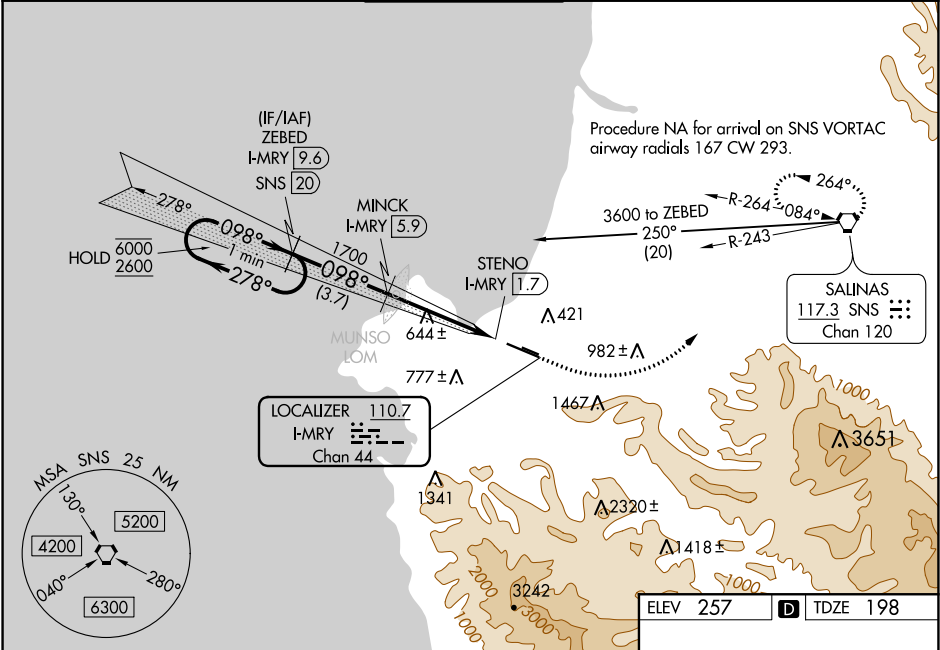


LOC/DME I-MRY	APP CRS	Rwy Idg	7000
<b>110.7</b>	<b>098°</b>	TDZE	<b>198</b>
Chan <b>44</b>		Apt Elev	<b>257</b>

ILS or LOC RWY 10R  
MONTEREY RGNL (MRY)

DME required.	MALSR	MISSED APPROACH: Climb to 600 then climbing left turn to 5000 on heading 030° and on SNS VORTAC R-243 to SNS VORTAC and hold, continue climb-in-hold to 5000. # Missed approach requires minimum climb of 265 feet per NM to 1360.
<b>⚠</b> Circling NA south of Rwy 10R-28L. For inop ALS, increase S-ILS 10R all Cats visibility to RVR 6000, and increase S-LOC 10R Cat C and D visibility to 2 SM.		

ATIS <b>119.25</b>	NORCAL APP CON <b>133.0 251.15</b> (360°-150°) <b>127.15 307.125</b> (151°-359°)	MONTEREY TOWER ★ <b>118.4</b> (CTAF) <b>0 257.8</b>	GND CON <b>120.875 348.6</b>	CLNC DEL <b>135.45</b>	UNICOM <b>122.95</b>
-----------------------	--	--	---------------------------------	---------------------------	-------------------------



ILS unusable from 1.7 DME inbound.	600	5000	SNS	SNS
One Minute Holding Pattern	ZEBED I-MRY [9.6]	MINCK I-MRY [5.9]	SNS R-243	SNS
6000 ← 278°	098° →	1700	*I-MRY [3.4]	*LOC only
2600	098°	1700	STENO I-MRY [1.7]	
GS 3.00°				
TCH 45				
	3.7 NM	2.5 NM	1.7 NM	0.5
CATEGORY	A	B	C	D
S-ILS 10R#	398/24	200 (200-½)		
S-ILS 10R	583/35	385 (400-½)		
S-LOC 10R	920/24	722 (700-½)	920-1½	722 (700-1½)
CIRCLING	920-1	663 (700-1)	1280-3	1023 (1100-3)