

WAAS CH 50530 W29B	APP CRS 292°	Rwy Idg TDZE 331 Apt Elev 336	8008
--	------------------------	---	-------------

RNAV (GPS) RWY 29L

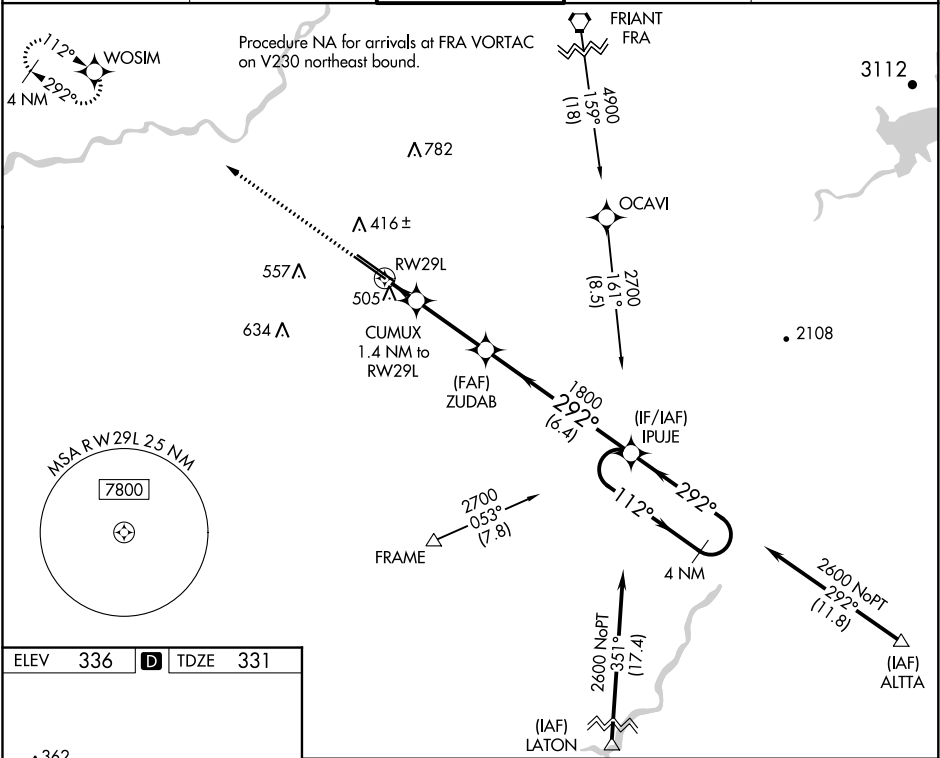
FRESNO YOSEMITE INTL (FAT)

▼

For uncompensated Baro-VNAV systems, LNAV/VNAV NA below 0°C (32°F) or above 54°C (130°F). DME/DME RNP-0.3 NA. Helicopter visibility reduction below ¾ SM NA.

MISSED APPROACH: Climb to 2000 direct WOSIM and hold.

ATIS 121.35 273.6	FRESNO APP CON 119.6 351.95	FRESNO TOWER 118.2 251.1	GND CON 121.7 348.6	CLNC DEL 124.35 348.6
-----------------------------	---------------------------------------	------------------------------------	-------------------------------	---------------------------------



ELEV 336 D TDZE 331

REIL Rwy 11L and 11R
HIRL Rwy 11L-29R
MIRL Rwy 11R-29L
TDZ/CL Rwy 29R

2000 WOSIM	4 NM Holding Pattern			
*LNAV only.	CUMUX 1.4 NM to RW29L	ZUDAB 1800	112° → 2600 ← 292°	
	RW29L	*820	GP 3.00° TCH 52	
	1.4 NM	3.1 NM	6.4 NM	
CATEGORY	A	B	C	D
LPV DA	581-¾ 250 (300-¾)			
LNAV/VNAV DA	667-1⅛ 336 (400-1⅛)			
LNAV MDA	760-1	429 (500-1)	760-1¼	429 (500-1¼)
CIRCLING	820-1	484 (500-1)	920-1½	920-2
			584 (600-1½)	584 (600-2)

SW-2, 03 DEC 2020 to 31 DEC 2020

SW-2, 03 DEC 2020 to 31 DEC 2020