

HI-ILS Z or LOC Z RWY 29R

LOC/DME I-FAT 111.3 Chan 50	APCH CRS 292°	Rwy Idg 29R 9227 TDZE 29R 333 Arpt Elev 336	29L 8008 29L 331
---	-------------------------	--	-----------------------------------

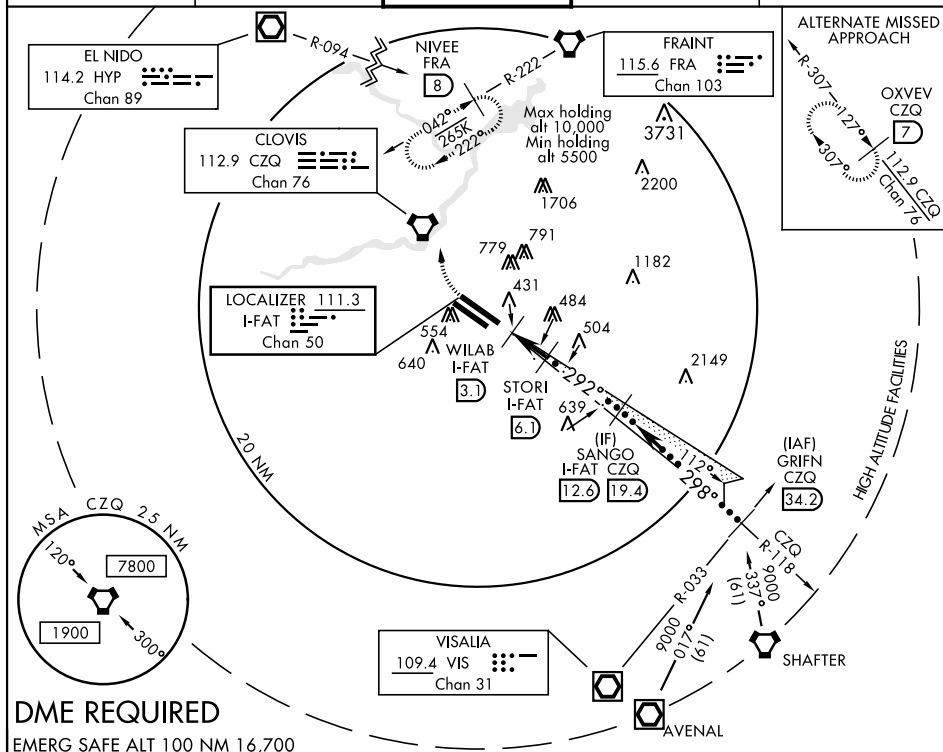
JAL-162 [USAF] FRESNO YOSEMITE INTL (KFAT)

T * When ALS inop, incr CAT CDE RVR to 40 and vis to $\frac{3}{4}$ mile.
 ** When ALS inop, incr CAT CDE RVR to 55 and vis to 1 mile.

ALSF-2

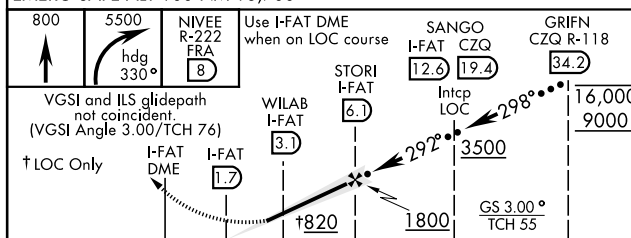
MISSED APPROACH: Climb to 800, then climbing right turn to 5500 on heading 330° and FRA VORTAC R-222 to NIVEE int (FRA 8 DME) and hold. continue climb-in-hold to 5500.

ATIS 121.35 273.6	FRESNO APP CON 132.35 323.25	FRESNO TOWER 118.2 251.1	GND CON 121.7 348.6	CLNC DEL 124.35 348.6
----------------------	---------------------------------	-----------------------------	------------------------	--------------------------



DME REQUIRED

EMERG SAFE ALT 100 NM 16,700



		1.4 NM	← 3 NM →		
CATEGORY	C		D	E	
S-LS 29R*	533/18		200	(200-½)	
S-LOC 29R**	700/35		367	(400-¾)	
SIDE STEP RWY 29L	700-1½ 369 (400-1½)		700-2	369	(400-2)
C CIRCLING	920-1½ 584 (600-1½)		920-2 584 (600-2)	1140-2¾ 804 (900-2¾)	

