

(OAL4.OAL) 17341  
COALDALE FOUR DEPARTURE

AL-162 (FAA)

FRESNO YOSEMITE INTL (FAT)  
FRESNO, CALIFORNIA

ATIS  
121.35 273.6  
CLNC DEL  
124.35 348.6  
GND CON  
121.7 348.6  
FRESNO TOWER  
118.2 251.1  
FRESNO DEP CON  
119.6 351.95

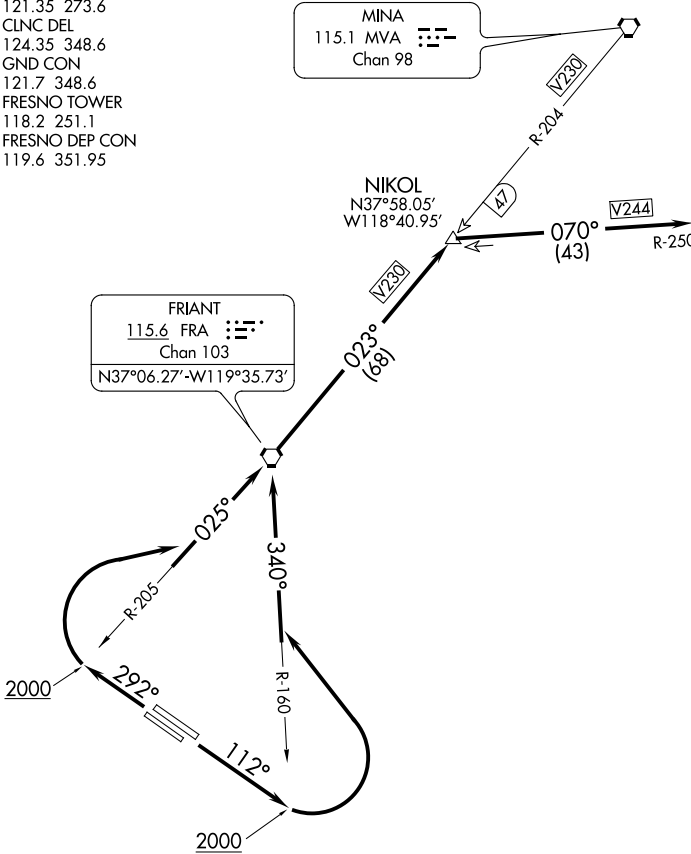
TOP ALTITUDE:  
ASSIGNED BY ATC

MINA  
115.1 MVA  
Chan 98

COALDALE  
117.7 OAL  
Chan 124  
N38°00.20'-W117°46.23'  
L-9, H-3

NIKOL  
N37°58.05'  
W118°40.95'

FRIANT  
115.6 FRA  
Chan 103  
N37°06.27'-W119°35.73'



TAKEOFF MINIMUMS  
Rwys 11L/R, 29L/R: Standard with minimum climb of  
260' per NM to 10700.

NOTE: Chart not to scale.



DEPARTURE ROUTE DESCRIPTION

TAKEOFF RUNWAYS 11L/R: Climb on heading 112° to 2000', then climbing left turn to intercept FRA R-160 to FRA VORTAC, thence. . . .  
TAKEOFF RUNWAYS 29L/R: Climb on heading 292° to 2000', then climbing right turn to intercept FRA R-205 to FRA VORTAC, thence. . . .

. . . continue climb to 14300 on FRA VORTAC R-023 and MVA VORTAC R-204 to NIKOL INT and on OAL VORTAC R-250 to OAL VORTAC. Maintain ATC assigned altitude.