

WAAS CH 49242 W12A	APP CRS 111°	Rwy Idg TDZE Apt Elev	3212 280 280
--	------------------------	-----------------------------	---

RNAV (GPS) RWY 12

FRESNO CHANDLER EXECUTIVE (FCH)

▼

RNP APCH.

▼

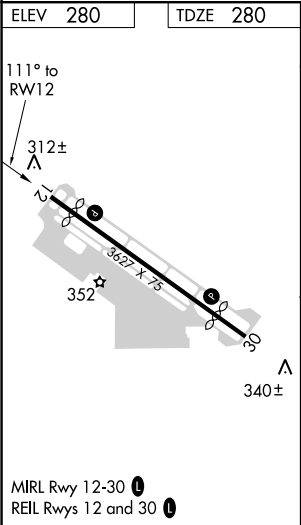
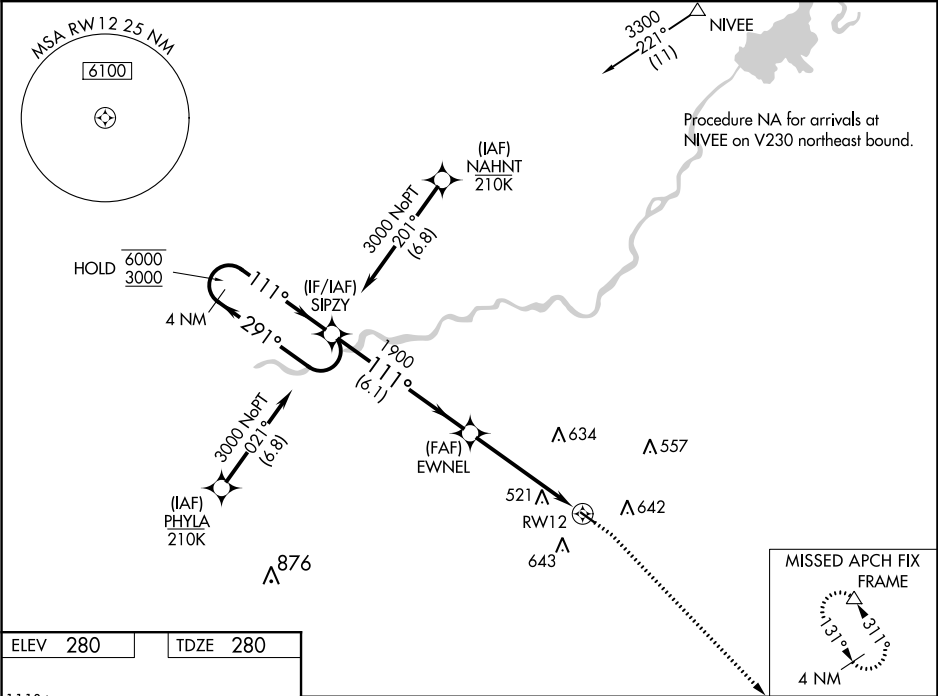
For uncompensated Baro-VNAV systems, LNAV/VNAV NA below -1° C or above 54°C.

▲

Rwy 12 helicopter visibility reduction below ¾ SM NA.
Circling Rwy 30 NA at night.

MISSED APPROACH: Climb to 800 then climbing right turn to 2000 direct FRAME and hold.

AWOS-3 135.225	FRESNO APP CON 119.0 323.25	CLNC DEL 119.0	UNICOM 123.0 (CTAF) 0
--------------------------	---------------------------------------	--------------------------	---------------------------------



4 NM Holding Pattern		800	2000	FRAME
SIPZY		*LNAV only		
6000 ← 291°		*1.4 NM to RWY 12		
3000 ← 111°		RWY 12		
GP 3.00°		6.1 NM		
TCH 40		3.6 NM		
		1.4 NM		
CATEGORY	A	B	C	D
LPV DA	530-¾ 250 (300-¾)			NA
LNAV/VNAV DA	809-1½ 529 (600-1½)			NA
LNAV MDA	780-1	500 (500-1)	780-1¾ 500 (500-1¾)	NA
CIRCLING	960-1	680 (700-1)	960-2 680 (700-2)	NA