

WAAS CH <b>63142</b> <b>W16A</b>	APP CRS <b>161°</b>	Rwy Idg TDZE <b>9934</b> Apt Elev <b>9934</b>
--	------------------------	---

RNAV (GPS) RWY 16

LAKE COUNTY (LXV)

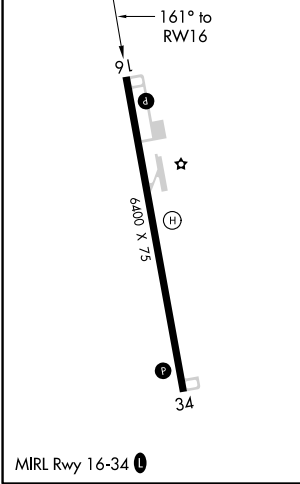
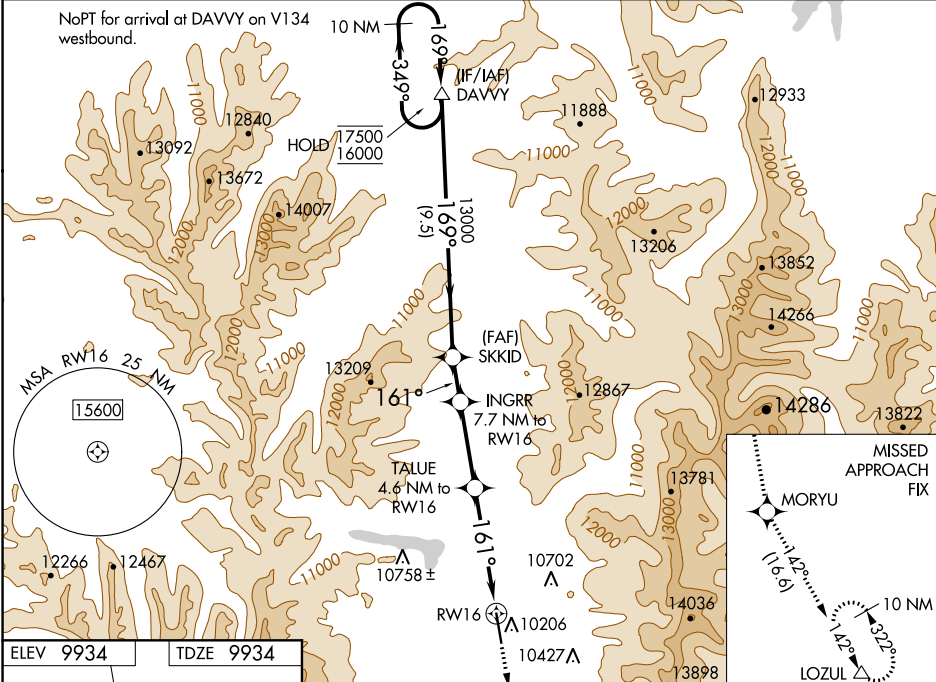
RNP APCH.

For uncompensated Baro-VNAV systems, LNAV/VNAV NA below -26°C or above 54°C. When local altimeter setting not received, procedure NA.

-27°C

MISSED APPROACH: Climb to 16000 direct MORYU and on track 142° to LOZUL and hold, continue climb-in-hold to 16000.  
#Missed approach requires minimum climb of 240 feet per NM to 12500.

ASOS <b>118.375</b>	DENVER CENTER <b>119.85 363.15</b>	UNICOM <b>122.8 (CTAF) 0</b>
------------------------	---------------------------------------	---------------------------------



VGSi and RNAV glidepath not coincident (VGSi Angle 3.00/TCH 45).				
10 NM Holding Pattern DAVVY				
17500 ← 349° → 169° → 169° → 13000				
GP 3.04° TCH 51				
→ 9.5 NM → 1.6 NM → 3.1 NM → 2.2 NM → 2.4 NM →				
CATEGORY	A	B	C	D
LPV DA#	10184-1	250 (300-1)		NA
LPV DA	10546-1¾	612 (700-1¾)		NA
LNAV/VNAV DA	10542-1¾	608 (700-1¾)		NA
LNAV MDA	10740-1 806 (900-1)	10740-1¼ 806 (900-1¼)	10740-2½ 806 (900-2½)	NA
CIRCLING	10740-1 806 (900-1)	11040-1½ 1106 (1200-1½)	12020-3 2086 (2100-3)	NA