

WAAS CH 90318 W34B	APP CRS 353°	Rwy Idg 12000 TDZE 5354 Apt Elev 5434
--	------------------------	--

RNAV (GPS) Y RWY 34R

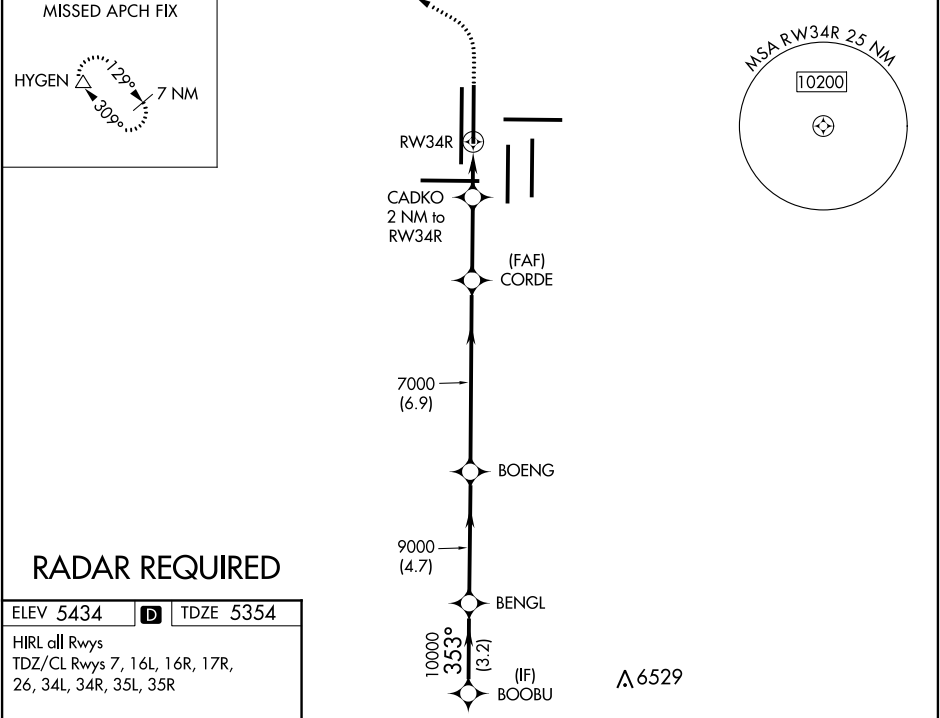
DENVER INTL (DEN)

⚠ For uncompensated Baro-VNAV systems, LNAV/VNAV NA below -25°C (-13°F) or above 46°C (114°F). DME/DME RNP- 0.3 NA. LNAV procedure NA during simultaneous operations. Simultaneous approach authorized with Rwy 35L/R. Use of FD or AP providing RNAV track guidance required during simultaneous operations.

ALSF-2

MISSED APPROACH: Climb to 6000 then climbing left turn to 10000 direct HYGEM and hold.

D-ATIS ARR 125.6 379.9 DEP 134.025	DENVER APP CON 119.3 307.3 (NORTH) 120.35 379.3 (SOUTH)	DENVER TOWER 135.3 351.95	GND CON 127.5 379.175	CLNC DEL 118.75	CPDLC
--	---	-------------------------------------	---------------------------------	---------------------------	-------



VGSi and RNAV glidepath not coincident (VGSi Angle 3.00/TCH 63).						6000	10000	HYGEN
BOOBU		BENGL		BOENG		CORDE	CADKO	
10000		353°		10000		9000	353°	7000
GP 3.00°						7000		*LNAV only
TCH 59								
		3.2 NM		4.7 NM		6.9 NM		3 NM
		2 NM						
CATEGORY		A		B		C		D
LPV DA				5554/18		200 (200-½)		
LNAV/VNAV DA				5838/60		484 (500-1¼)		
LNAV MDA		5940/24		586 (600-½)		5940-1¼		586 (600-1¼)