

WAAS CH <b>45619</b> <b>W34A</b>	APP CRS <b>353°</b>	Rwy Idg <b>16000</b> TDZE <b>5327</b> Apt Elev <b>5434</b>
--	------------------------	--

RNAV (GPS) Y RWY 34L  
DENVER INTL (DEN)

**▼** For uncompensated Baro-VNAV systems, LNAV/VNAV NA below -25°C (-13°F) or above 48°C (118°F). DME/DME RNP-0.3 NA. LNAV procedure NA during simultaneous operations. Simultaneous approach authorized with Rwy 35L/R. Use of FD or AP providing RNAV track guidance required during simultaneous operations.

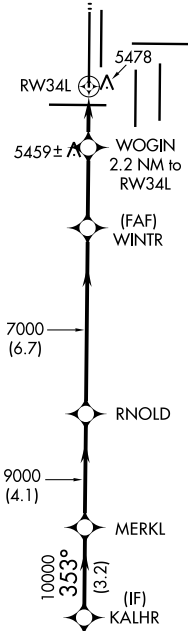
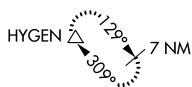
ALSF-2



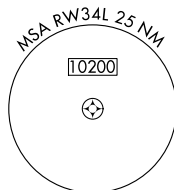
**MISSED APPROACH:** Climb to 5900 then climbing left turn to 10000 direct HYGEM and hold.

D-ATIS		DENVER APP CON		DENVER TOWER		GND CON		CLNC DEL		CPDLC
ARR	125.6 379.9	119.3 307.3	120.35 379.3	135.3 351.95		127.5 379.175	118.75			
DEP	134.025	(NORTH)	(SOUTH)							

## MISSED APCH FIX



6529  
A

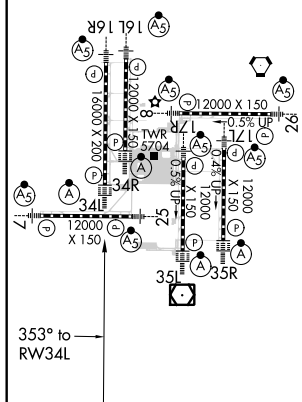


## RADAR REQUIRED

ELEV 5434		TDZE 5327
-----------	---	-----------

HIRL a|| Rwys

TDZ/CL Rwy's 7, 16L, 16R, 17R,  
26, 34L, 34R, 35L, 35R



DENVER, COLORADO

Amdt 2C 12OCT17

39°52'N-104°40'W

DENVER INTL (DEN)

RNAV (GPS) Y RWY 34L

SW-1, 03 DEC 2020 to 31 DEC 2020

SW-1, 03 DEC 2020 to 31 DEC 2020

		VGS1 and RNAV glidepath not coincident (VGS1 Angle 3.00/TCH 70).		5900 ↑		10000 ↖		HYGEN △	
KALHR		MERKL		RNOLD		WINTR		WOGIN	
10000		353°		10000		9000		353°	
GP 3.00°		TCH 50		7000		*6060		*1 NM to RW34L	
3.2 NM		4.1 NM		6.7 NM		2.9 NM		1.2 NM	
CATEGORY		A		B		C		D	
LPV	DA	5527/18		200 (100-½)					
RNAV/ VNAV	DA	5660/30		333 (300-¾)					
RNAV	MDA	5720/24		393 (300-½)		5720/35		393 (300-¾)	