
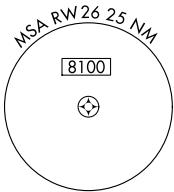
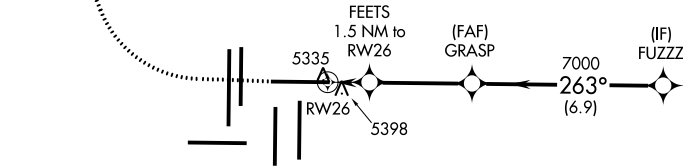


WAAS CH 58128 W26A	APP CRS 263°	Rwy Idg 12000 TDZE 5309 Apt Elev 5434
--	------------------------	--

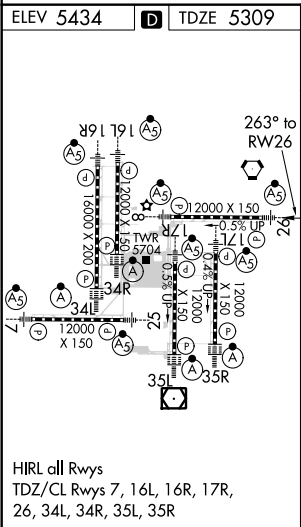
RNAV (GPS) Y RWY 26

DENVER INTL (DEN)

RNP APCH.					<div>MALSR</div> <div></div>	MISSED APPROACH: Climb to 6000 then climbing right turn to 11000 direct NIWOT and hold.	
RADAR required.							
<div>▼</div> For uncompensated Baro-VNAV systems, LNAV/VNAV NA below -25°C or above 46°C. Simultaneous approach authorized with Rwy 25. For inoperative ALS, increase LNAV/VNAV all Cots visibility to RVR 4000 and LNAV Cat C/D visibility to RVR 5500. LNAV procedure NA during simultaneous operations. Use of FD or AP providing RNAV track guidance required during simultaneous operations.							
D-ATIS	DENVER APP CON		DENVER TOWER		GND CON	CLNC DEL	CPDLC
ARR DEP	125.6 379.9 134.025	119.3 307.3 120.35 379.3 (NORTH) (SOUTH)	132.35 239.275		121.85 377.1	118.75	



▲ 6147



6000		11000	NIWOT	VGSI and RNAV glidepath not coincident (VGSI Angle 3.00/TCH 70).	
* LNAV only				FUZZ	
		FEETS 1.5 NM to RW26		GRASP	
		* 1 NM to RW26		7000	
		5820*		263°	
		1 NM		6.9 NM	
		0.5 NM		3.7 NM	
CATEGORY		A		B	
LPV DA		5509/18		200 (100-½)	
LNAV/VNAV DA		5559/24		250 (200-½)	
LNAV MDA		5660/24		5660/30	
		351 (300-½)		351 (300-½)	