

WAAS CH 40428 W25A	APP CRS 263°	Rwy Idg 12000 TDZE 5355 Apt Elev 5434
--	------------------------	--

RNAV (GPS) Y RWY 25

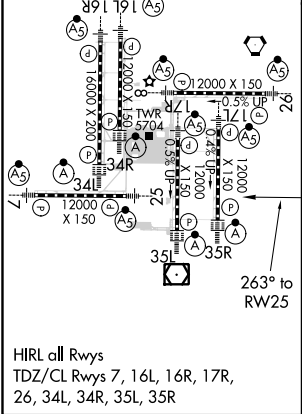
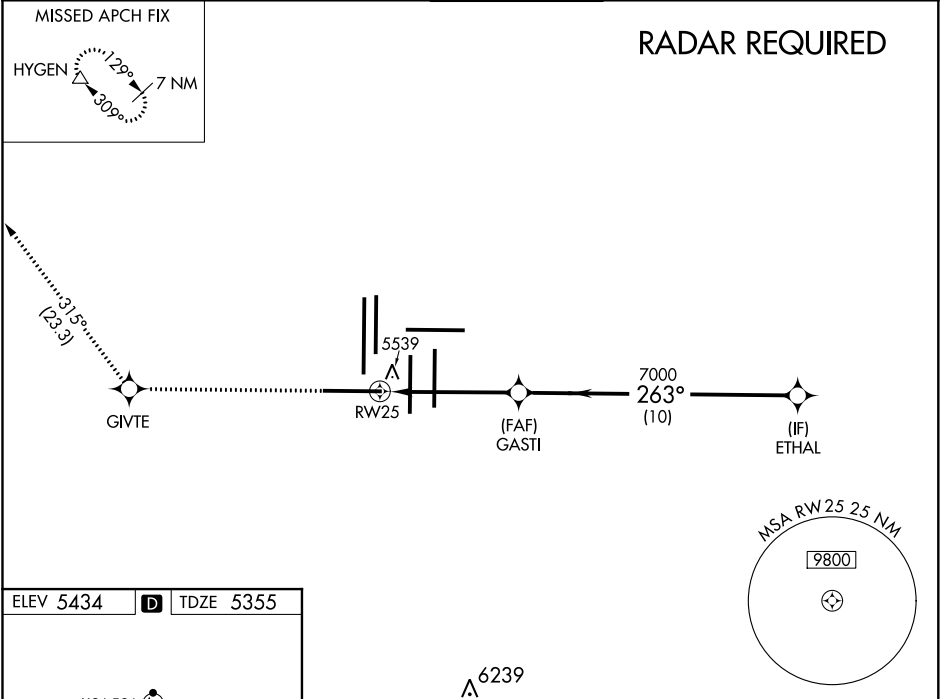
DENVER INTL (DEN)

⚠ For uncompensated Baro-VNAV systems, LNAV/VNAV NA below -25°C (-13°F) or above 46°C (116°F). Simultaneous approach authorized with Rwy 26. DME/DME RNP-0.3 NA. Use of FD or AP providing track guidance required during simultaneous operations. LNAV procedure NA during simultaneous operations. For inoperative MALSR, increase LNAV/VNAV all Cats visibility to RVR 4500. # RVR 1800 authorized with use of FD or AP or HUD to DA.

MALSR

MISSED APPROACH: Climb to 10000 direct GIVTE and on track 315° to HYGEN and hold.

D-ATIS	DENVER APP CON	DENVER TOWER	GND CON	CLNC DEL	CPDLC
ARR 125.6 379.9 DEP 134.025	119.3 307.3 120.35 379.3 (NORTH) (SOUTH)	128.75 273.55	127.5 379.175	118.75	



10000	GIVTE	HYGEN	VGSI and RNAV glidepath not coincident (VGSI Angle 3.00/TCH 83).		ETHAL
↑		tr 315°			
* LNAV only					
1.1 NM 3.9 NM 10 NM					
CATEGORY	A	B	C	D	
LPV DA #	5555/24 200 (200-½)				
LNAV/VNAV DA	5700/30 345 (300-⅝)				
LNAV MDA	5800/24 445 (400-½)		5800/45 445 (400-⅞)		