

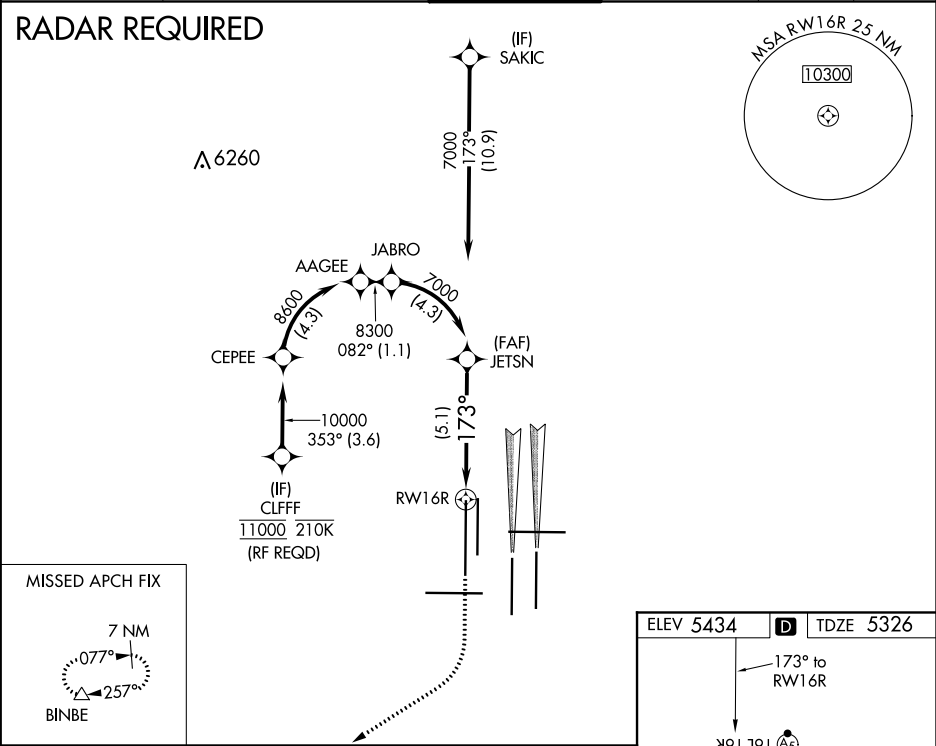
APP CRS 173°	Rwy Idg 16000
	TDZE 5326
	Apt Elev 5434

RNAV (RNP) Z RWY 16R

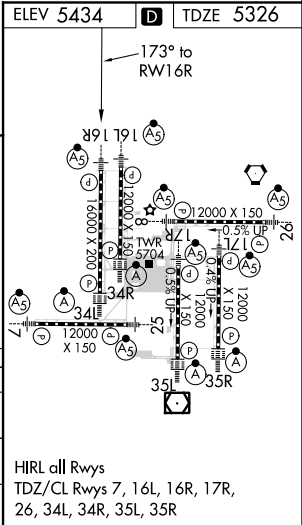
DENVER INTL (DEN)

<div><div>GPS required. Simultaneous approach authorized. For uncompensated Baro-VNAV systems, procedure NA below -25°C (-13°F) or above 46°C (116°F). Use of FD or AP providing RNAV track guidance required during simultaneous operations.</div></div>	<div><div>MALSR</div><div></div></div>	<div>MISSED APPROACH: Climb to 5900 then climbing right turn to 10000 direct BINBE and hold, continue climb-in-hold to 10000.</div>
---	--	---

D-ATIS ARR 125.6 379.9 DEP 134.025	DENVER APP CON 119.3 307.3 120.35 379.3 (NORTH) (SOUTH)	DENVER TOWER 135.3 351.95	GND CON 127.5 379.175	CLNC DEL 118.75	CPDLC
--	--	-------------------------------------	---------------------------------	---------------------------	-------



5900	10000	BINBE	VGSI and RNAV glidepath not coincident (VGSI Angle 3.00/TCH 71).	JETSN
				7000
<div><div>RWY 16R</div><div>173°</div><div>7000</div><div>See planview for multiple IF locations.</div><div>GP 3.00°</div><div>TCH 55°</div></div>				
CATEGORY	A	B	C	D
RNP 0.10 DA	5586/50 260 (200-1)			
RNP 0.30 DA	5651/50 325 (300-1)			



SW-1, 03 DEC 2020 to 31 DEC 2020

SW-1, 03 DEC 2020 to 31 DEC 2020