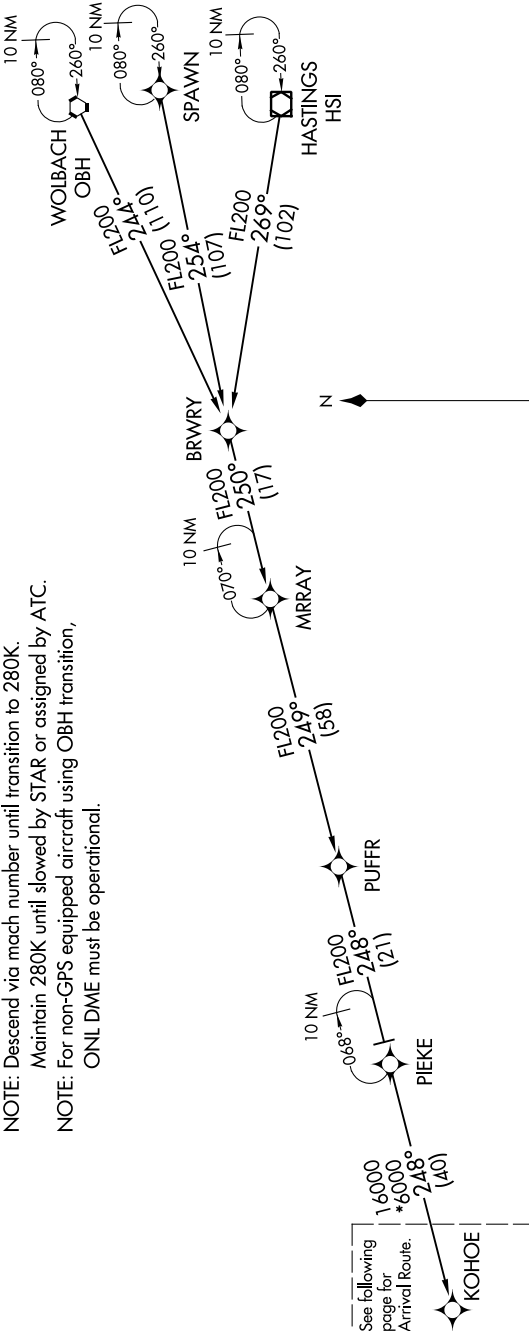


KOHOE FOUR ARRIVAL (RNAV) Transition Routes

SW-1, 03 DEC 2020 to 31 DEC 2020

DENVER APP CON
124.95 346.4
D-ATIS ARR
125.6 379.9

- NOTE: RADAR required.
- NOTE: RNAV 1.
- NOTE: DME/DME/IRU or GPS required.
- NOTE: Turbojet aircraft only.
- NOTE: Expect runway assignment on initial contact with Denver TRACON.
- NOTE: Descend via mach number until transition to 280K.
- NOTE: Maintain 280K until slowed by STAR or assigned by ATC.
- NOTE: For non-GPS equipped aircraft using OBH transition,
ONL DME must be operational.



- HASTINGS TRANSITION (HSI.KOHOE4)
- SPAWN TRANSITION (SPAWN.KOHOE4)
- WOLBACH TRANSITION (OBH.KOHOE4)

(CONTINUED ON FOLLOWING PAGE)

NOTE: Chart not to scale.

SW-1, 03 DEC 2020 to 31 DEC 2020