
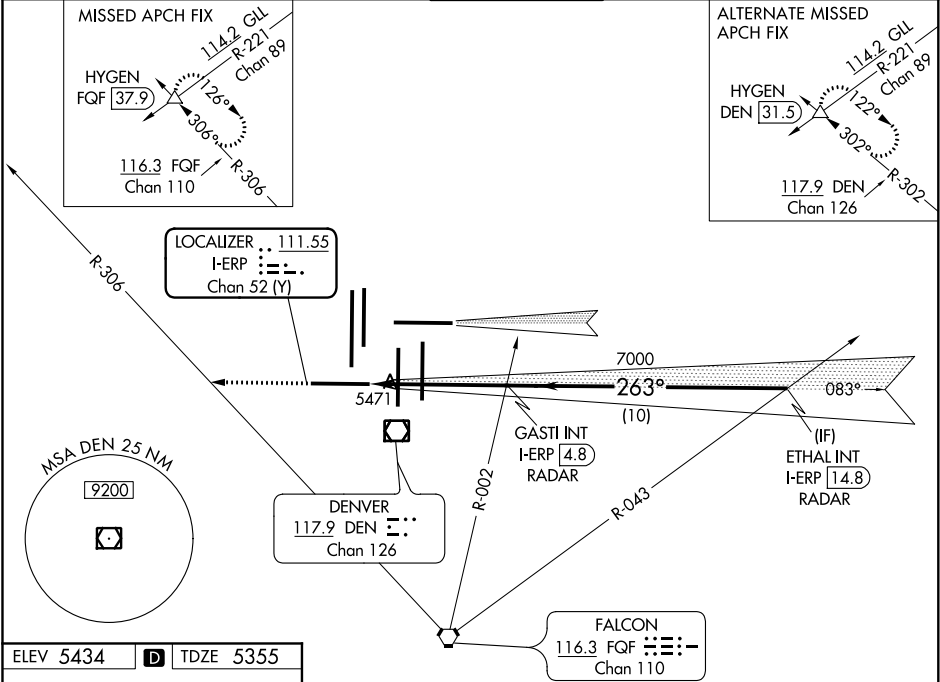


LOC/DME I-ERP 111.55 Chan 52(Y)	APP CRS 263°	Rwy Idg 12000 TDZE 5355 Apt Elev 5434
---	------------------------	--

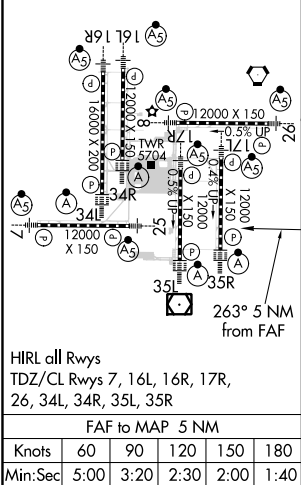
ILS or LOC RWY 25
DENVER INTL (DEN)

▽ Simultaneous approach authorized with Rwy 26. For inoperative MALSR, increase S-LOC 25 Cat C and D visibility to RVR 5500. **RVR 1800 authorized with use of FD or AP or HUD to DA.	MALSR 	MISSED APPROACH: Climb to 10000 on heading 263° and on FQF VORTAC R-306 to HYGEN INT/FQF 37.9 DME and hold.
---	--	---

D-ATIS ARR 125.6 379.9 DEP 134.025	DENVER APP CON 119.3 307.3 120.35 379.3 (NORTH) (SOUTH)	DENVER TOWER 128.75 273.55	GND CON 127.5 379.175	CLNC DEL 118.75	CPDLC
--	--	--------------------------------------	---------------------------------	---------------------------	-------



ELEV 5434	D	TDZE 5355
------------------	----------	------------------



DENVER, COLORADO
Amdt 3A 11DEC14

39°52'N-104°40'W

RADAR REQUIRED

△ 6270 ±	10000 hdg 263° *LOC only	FQF R-306	HYGEN △	VGSI and ILS glidepath not coincident (VGSI Angle 3.00/TCH 83).	ETHAL INT I-ERP 14.8 RADAR
			*I-ERP 0.7	GASTI INT I-ERP 4.8 RADAR	
				7000	10000
				0.9 NM	4.1 NM
				10 NM	
				GS 3.00° TCH 55	
CATEGORY	A	B	C	D	
S-ILS 25 **	5555/24 200 (200-½)				
S-LOC 25	5720/24 365 (300-½)		5720/35 365 (300-¾)		

DENVER INTL (DEN)
ILS or LOC RWY 25

SW-1, 03 DEC 2020 to 31 DEC 2020

SW-1, 03 DEC 2020 to 31 DEC 2020