

LOC/DME I-ACX <b>108.5</b> Chan <b>22</b>	APP CRS <b>173°</b>	Rwy Idg TDZE <b>5392</b> Apt Elev <b>5434</b>
---	------------------------	---

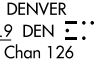
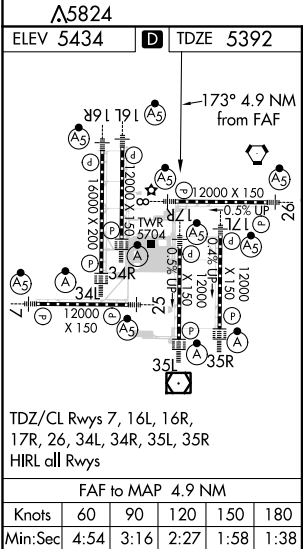
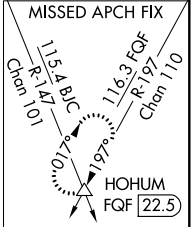
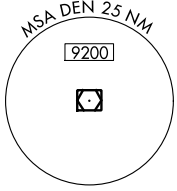
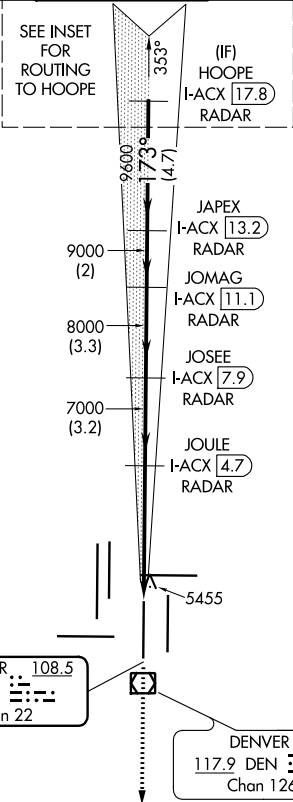
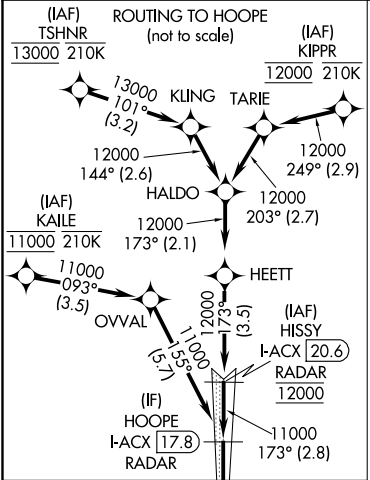
ILS or LOC RWY 17R  
DENVER INTL (DEN)

DME or RADAR required for LOC only.  
RNAV 1-GPS or RADAR required for procedure entry.  
Simultaneous approach authorized. For inop ALS, increase S-17R LOC Cat C/D visibility to RVR 5500.



MISSED APPROACH: Climb to 10000 on heading 173° and on FQF VORTAC R-197 to HOHUM INT/FQF 22.5 DME and hold.

D-ATIS ARR <b>125.6 379.9</b> DEP <b>134.025</b>	DENVER APP CON <b>119.3 307.3 120.35 379.3</b> (NORTH) (SOUTH)	DENVER TOWER <b>133.3 322.45</b>	GND CON <b>121.85 377.1</b>	CLNC DEL <b>118.75</b>	CPDLC
--	--	-------------------------------------	--------------------------------	---------------------------	-------



10000 ↑ hdg 173°	FQF R-197	HOHUM △	VGS and ILS glidepath not coincident (VGS Angle 3.00/TCH 69). *LOC only			HOPE I-ACX 17.8 RADAR
I-ACX DME ANTENNA	JOULE I-ACX 4.7 RADAR	JOSEE I-ACX 7.9 RADAR	JOMAG I-ACX 11.1 RADAR	JAPEX I-ACX 13.2 RADAR		
I-ACX 0.2	I-ACX* 0.7	7000	8000	9000	11000	

SW-1, 03 DEC 2020 to 31 DEC 2020

SW-1, 03 DEC 2020 to 31 DEC 2020