

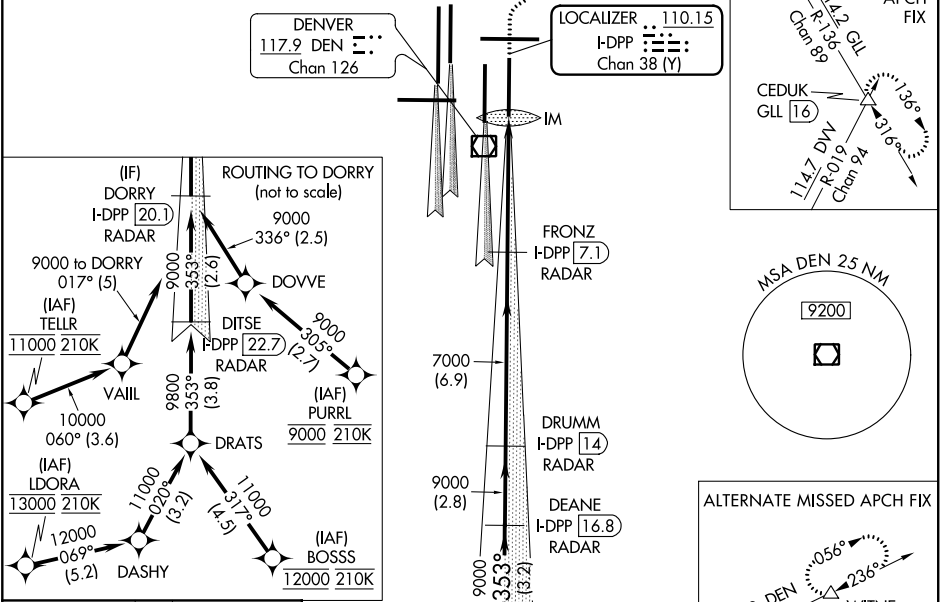
LOC/DME I-DPP 110.15 Chan 38(Y)	APP CRS 353°	Rwy Idg 12000 TDZE 5370 Apt Elev 5434
---	------------------------	--

ILS RWY 35R (CAT II & III)
DENVER INTL (DEN)

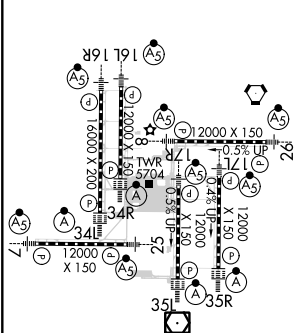
Simultaneous approach authorized with Rwy 34L, Rwy 34R, and Rwy 35L. CAT II: RVR 1000 authorized with specific OPSPEC, MSPEC, or LOA approval and use of autoland or HUD to touchdown.	ALSF-2 	MISSED APPROACH: Climb to 5800 then climbing right turn to 10000 on heading 048° and on GLL VORTAC R-136 to CEDUK/GLL 16 DME and hold.
---	------------	--

D-ATIS ARR 125.6 379.9 DEP 134.025	DENVER APP CON 119.3 307.3 120.35 379.3 (NORTH) (SOUTH)	DENVER TOWER 132.35 239.275	GND CON 121.85 377.1	CLNC DEL 118.75	CPDLC
--	--	---------------------------------------	--------------------------------	---------------------------	-------

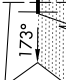
RADAR or GPS REQUIRED



ELEV 5434	D	TDZE 5370
------------------	----------	------------------



HIRL all Rwy
TDZ/CL Rwy 7, 16L, 16R, 17R, 26, 34L,
34R, 35L, 35R

SEE INSET FOR ROUTING TO DORRY			(IF) DORRY I-DPP [20.1] RADAR	6569 Λ	117.9 R-056 Chan 126	WINE DEN [25.6]		
VGSI and ILS glidepath not coincident (VGSI Angle 3.00/TCH 66).					5800 ↑	10000 hdg 048°	GLL R-136	CEDUK △
DORRY I-DPP [20.1] RADAR	DEANE I-DPP [16.8] RADAR	DRUMM I-DPP [14] RADAR	FRONZ I-DPP [7.1] RADAR					
9000	353°	9000	9000	7000	IM	5474		
GS 3.00° TCH 59				7000				
	3.2 NM	2.8 NM	6.9 NM	4.9 NM	1126'			
CATEGORY	A	B	C	D				
S-ILS 35R	CAT II RA 111/12 100 DA 5470							
S-ILS 35R	CAT IIIa RVR 07							
S-ILS 35R	CAT IIIb RVR 03							
S-ILS 35R	CAT IIIc NA							
CATEGORY II & III ILS - SPECIAL AIRCREW & AIRCRAFT CERTIFICATION REQUIRED								

SW-1, 03 DEC 2020 to 31 DEC 2020

SW-1, 03 DEC 2020 to 31 DEC 2020