

ILS RWY 35L (CAT II & III)
DENVER INTL (DEN)

ALSF-2

MISSED APPROACH: Climb to 10000 then right turn direct GLL VOR/DME and hold.

T Simultaneous approach authorized. CAT II: RVR 1000 authorized with specific OPSPEC, MSPEC, or LOA approval and use of autoland or HUD to touchdown.

MISSED APCH FIX

025°

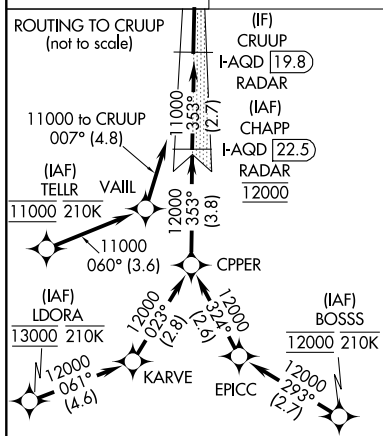
205° R-025

GILL

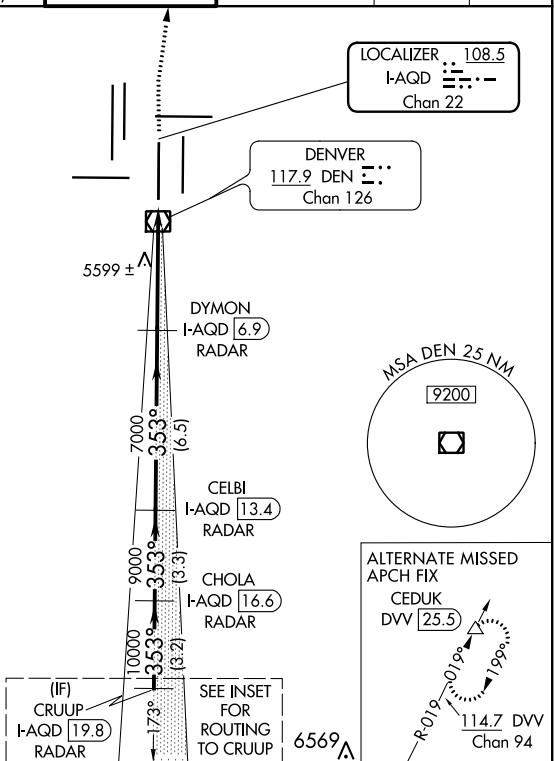
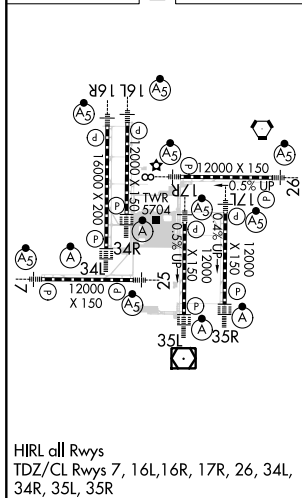
GILL

114.2

Chan 89



ELEV 5434	D	TDZE 5434
-----------	----------	-----------

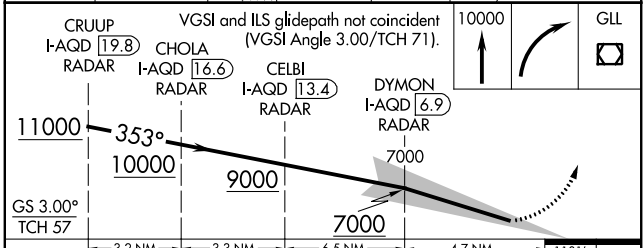


ALTERNATE MISSED
APCH FIX

CEDUK
DVV 25.5

R-019 019° 19°

114.7 DVV
Chan 94



	5.21 NM	5.31 NM	6.31 NM	4.71 NM	1101
CATEGORY	A	B	C	D	
S-ILS 35L	CAT II RA 115/12 100 DA 5534				
S-ILS 35L	CAT III RVR 03				

CATEGORY II & III ILS - SPECIAL AIRCREW
& AIRCRAFT CERTIFICATION REQUIRED