

CHUWY ONE DEPARTURE (RNAV)

AL-9077 (FAA)

DENVER INTL (DEN)  
DENVER, COLORADO

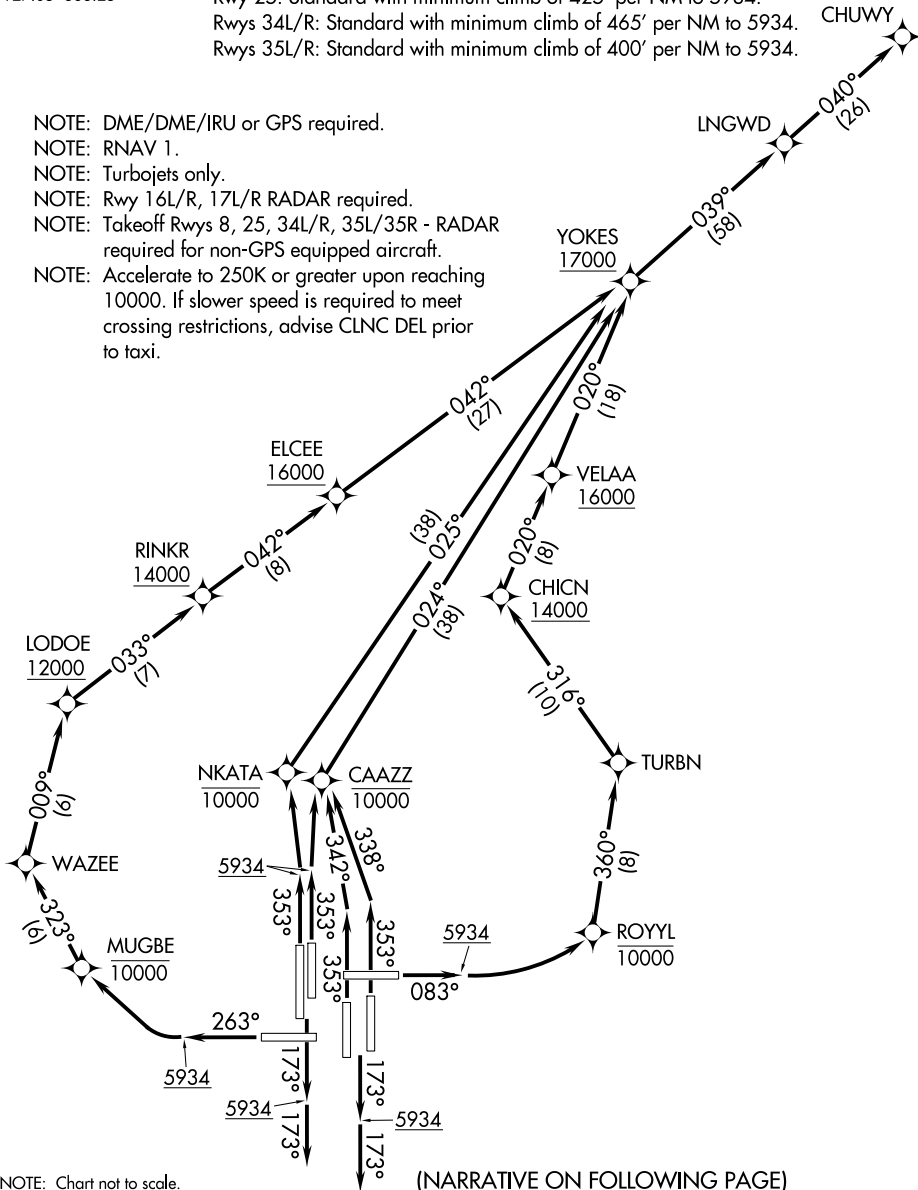
D-ATIS DEP  
134.025  
CLNC DEL  
118.75  
CPDLC  
DENVER DEP CON  
127.05 363.25

TAKEOFF MINIMUMS

Rwys 7, 26: NA-ATC.  
Rwy 8: Standard with minimum climb of 400' per NM to 5934.  
Rwys 16L/R, 17L/R: Standard.  
Rwy 25: Standard with minimum climb of 425' per NM to 5934.  
Rwys 34L/R: Standard with minimum climb of 465' per NM to 5934.  
Rwys 35L/R: Standard with minimum climb of 400' per NM to 5934.

TOP ALTITUDE:  
FL230

- NOTE: DME/DME/IRU or GPS required.  
NOTE: RNAV 1.  
NOTE: Turbojets only.  
NOTE: Rwy 16L/R, 17L/R RADAR required.  
NOTE: Takeoff Rwys 8, 25, 34L/R, 35L/35R - RADAR required for non-GPS equipped aircraft.  
NOTE: Accelerate to 250K or greater upon reaching 10000. If slower speed is required to meet crossing restrictions, advise CLNC DEL prior to taxi.



CHUWY ONE DEPARTURE (RNAV)