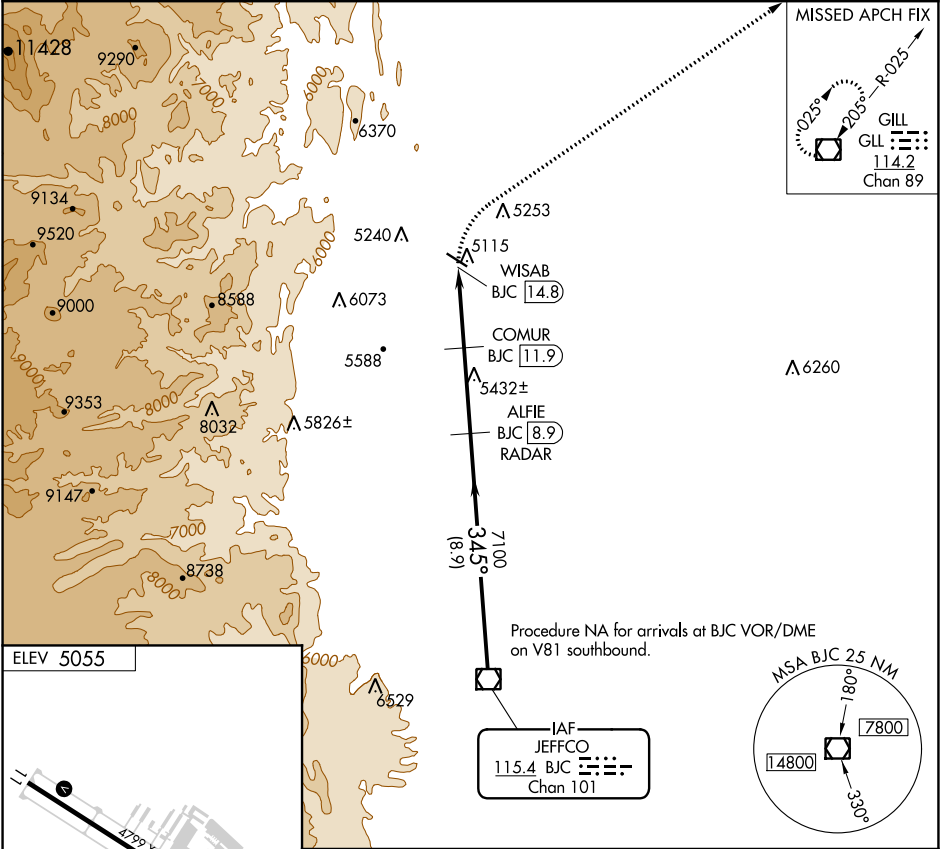


| | | | |
|-------------|---------|--------------|------|
| VOR/DME BJC | APP CRS | Rwy Idg TDZE | N/A |
| 115.4 | 345° | Apt Elev | N/A |
| Chan 101 | | | 5055 |

VOR/DME-A
VANCE BRAND (LMO)

| | | | |
|---|--|--------------------------------|--|
|  | When local altimeter setting not received, use Denver Intl altimeter setting and increase all MDA 120 feet; and increase Cat C visibility ½ mile and Cat D ¼ mile. | | MISSED APPROACH: Climbing right turn to 7000 direct GLL VOR/DME and hold. |
| | AWOS-3 120.0 | DENVER APP CON 126.1 360.75 | UNICOM 122.975 (CTAF)  |



| | | | | |
|--------------------|----------------|----------------|-------------------------|-----------------------|
| ELEV 5055 | 7000 | GLL | ALFIE BJC 8.9 RADAR | BJC VOR/DME |
| 345° 6 NM from FAF | WISAB BJC 14.8 | COMUR BJC 11.9 | 7100 | 9200 |
| MRL Rwy 11-29 0 | 2.9 NM | 3.1 NM | 8.9 NM | |
| CATEGORY | A | B | C | D |
| CIRCLING | 5640-1 | 585 (600-1) | 5640-1½ 585 (600-1½) | 5640-2 585 (600-2) |