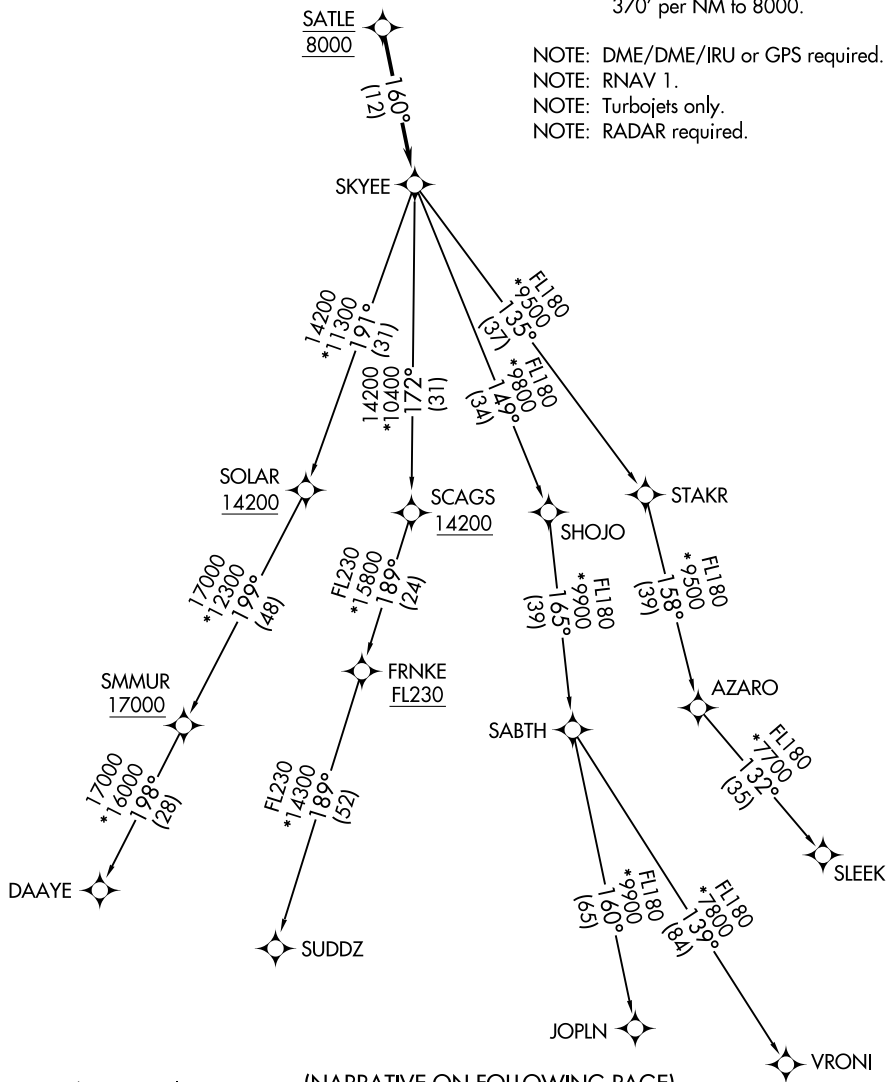


DENVER DEP CON  
126.1 360.75

**TOP ALTITUDE:**  
**FL230**



## TAKEOFF MINIMUMS

Rwy 11: Standard.

Rwy 29: Standard with minimum climb of 370' per NM to 8000.

NOTE: DME/DME/IRU or GPS required.

NOTE: RNAV 1.

NOTE: Turbojets only.

NOTE: RADAR required.

NOTE: Chart not to scale.

(NARRATIVE ON FOLLOWING PAGE)

## SKYEE ONE DEPARTURE (RNAV)

(SKYEE1.SKYEE) 26MAR20

LONGMONT, COLORADO  
VANCE BRAND (LMO)

SW-1, 03 DEC 2020 to 31 DEC 2020