

(CAP1.CEP) 16035

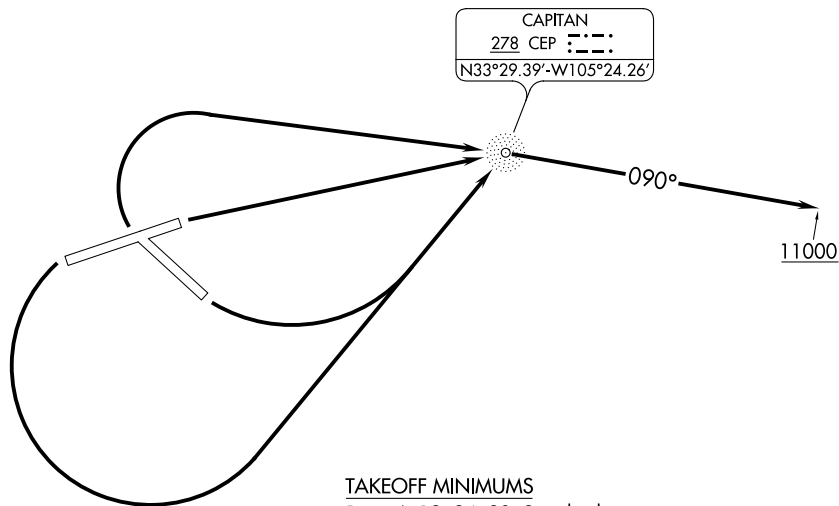
CAPTAN ONE DEPARTURE (OBSTACLE)

SL-6922 (FAA)

SIERRA BLANCA RGNL (SRR)

RUIDOSO, NEW MEXICO

ALBUQUERQUE CENTER
132.65 257.6



TAKEOFF OBSTACLE NOTES

Rwy 12: Trees beginning 61' from DER, left and right of centerline, up to 100' AGL/6728' MSL.

Rwy 24: Bush 758' from DER, 374' left of centerline, up to 21' AGL/6835' MSL.

Bush 659' from DER, 265' right of centerline, up to 19' AGL/6832' MSL.

Rwy 30: Poles 1092' from DER, 433' left of centerline, up to 72' AGL/6847' MSL.

Buildings 753' from DER, 410' left of centerline, 35' AGL/6808' MSL.

Vehicles on roadway 436' from DER, 254' right of centerline, up to 15' AGL/6787' MSL.

Sign 47' from DER, 60' right of centerline, up to 6' AGL/6774' MSL.

Signs 72' from DER, 455' left of centerline, up to 6' AGL/6779' MSL.

NOTE: Chart not to scale.

DEPARTURE ROUTE DESCRIPTION

TAKEOFF RUNWAY 6: Climb direct CEP NDB, then on CEP bearing 090° to 11000 before proceeding on course.

TAKEOFF RUNWAY 12: Climbing left turn direct CEP NDB, then on CEP bearing 090° to 11000 before proceeding on course.

TAKEOFF RUNWAY 24: Climbing left turn direct CEP NDB, then on CEP bearing 090° to 11000 before proceeding on course.

TAKEOFF RUNWAY 30: Climbing right turn direct CEP NDB, then on CEP bearing 090° to 11000 before proceeding on course.

CAPTAN ONE DEPARTURE (OBSTACLE)

(CAP1.CEP) 05MAY11

RUIDOSO, NEW MEXICO
SIERRA BLANCA RGNL (SRR)

SW-1, 03 DEC 2020 to 31 DEC 2020

SW-1, 03 DEC 2020 to 31 DEC 2020