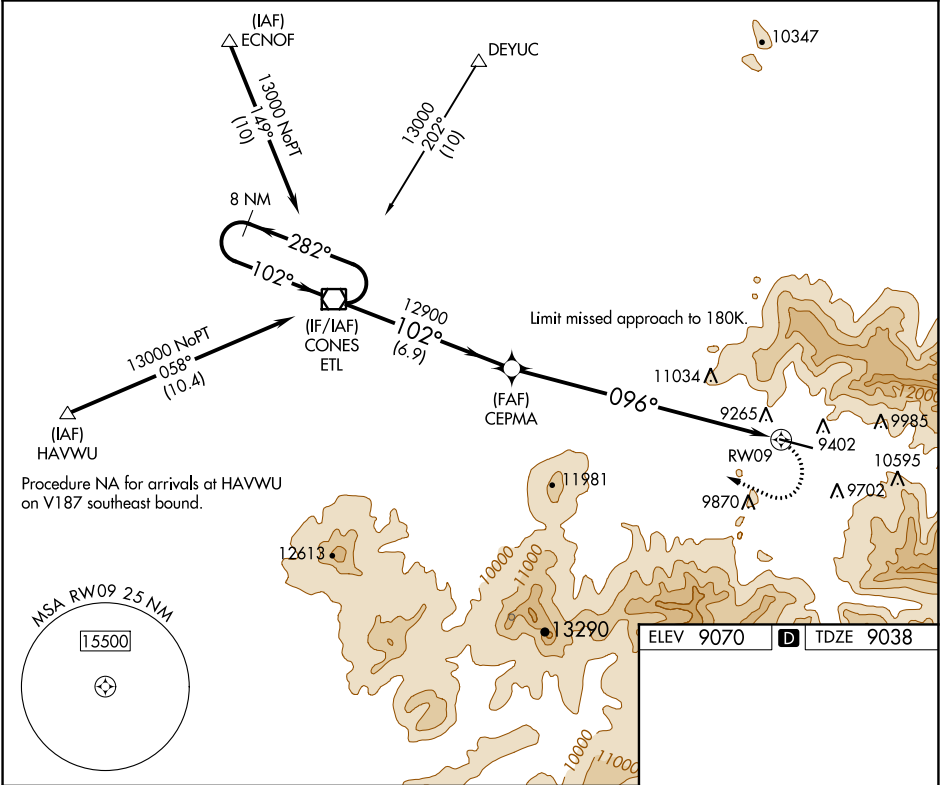


WAAS CH 82637 W09B	APP CRS 096°	Rwy Idg 6911 TDZE 9038 Apt Elev 9070
--	------------------------	---

RNAV (GPS) Z RWY 9
TELLURIDE RGNL (TEX)

<p>⚠ Circling NA at night. When local altimeter setting not received, procedure NA. ⚠ Circling NA north of Rwy 9-27. DME/DME RNP-0.3 NA. ❄ -18°C</p>	<p>*Missed approach requires a minimum climb of 380 feet per NM to 12500; if unable to meet climb gradient, see RNAV (GPS) Y RWY 9.</p>	<p>MISSED APPROACH: Climbing right turn to 15000 direct ETL VOR/DME and hold, continue climb-in-hold to 15000.</p>
---	---	--

AWOS-3 118.325	DENVER CENTER 125.35 354.05	UNICOM 123.0 (CTAF) 1
--------------------------	---------------------------------------	---------------------------------



8 NM Holding Pattern		ETL VOR/DME	15000	ETL	096° to RWY 9	7111 X 100	0.4% UP	27
13000		282°	102°	102°	3.59° TCH 46	096°		
		CEPMA	12900	10 NM				
		6.9 NM						
CATEGORY	A	B	C	D				
LP MDA*	10640-1¼ 1602 (1600-1¼)	10640-1½ 1602 (1600-1½)	10640-3 1602 (1600-3)	NA				
CIRCLING	11640-1¼ 2570 (2600-1¼)	11640-1½ 2570 (2600-1½)	11640-3 2570 (2600-3)	NA				
					HIRL Rwy 9-27 1 REIL Rws 9 and 27 1			

SW-1, 03 DEC 2020 to 31 DEC 2020

SW-1, 03 DEC 2020 to 31 DEC 2020