

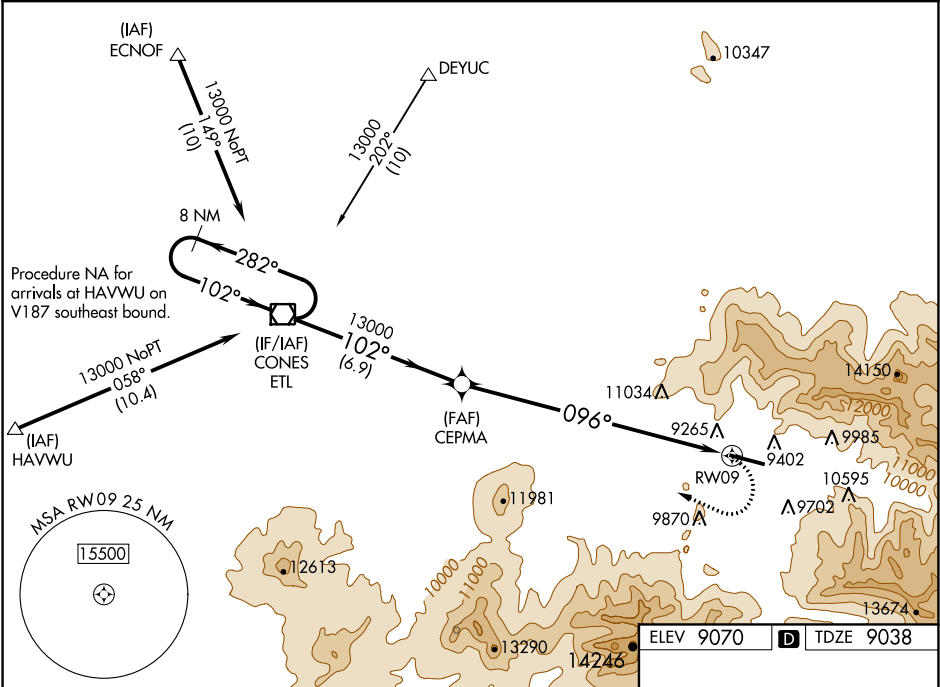
WAAS CH 82621 W09A	APP CRS 096°	Rwy Idg TDZE 6911 9038 Apt Elev 9070
--	------------------------	--

RNAV (GPS) Y RWY 9
TELLURIDE RGNL (TEX)

⚠ Circling NA at night. When local altimeter setting not received, procedure NA.
Circling NA north of Rwy 9-27. DME/DME RNP-0.3 NA.
❄ -18°C

✈ MISSED APPROACH: Climbing right turn to 15000 direct ETL VOR/DME and hold, continue climb-in-hold to 15000.

AWOS-3 118.325	DENVER CENTER 125.35 354.05	UNICOM 123.0 (CTAF) 0
--------------------------	---------------------------------------	---------------------------------



8 NM Holding Pattern		ETL VOR/DME	CEPMA	15000 ETL
13000 ← 282°		102° → 13000	*6.3 NM to RWY09	*LNAV only.
102° → 13000		102° → 13000	3.69° TCH 46	RWY09
6.9 NM		3.7 NM	6.3 NM	
CATEGORY	A	B	C	D
LP MDA	11500-1¼ 2462 (2500-1¼)	11500-1½ 2462 (2500-1½)	NA	
LNAV MDA#	11900-1¼ 2862 (2900-1¼)	11900-1½ 2862 (2900-1½)	NA	
LNAV MDA	12140-1¼ 3102 (3100-1¼)	12140-1½ 3102 (3100-1½)	NA	
CIRCLING	12140-1¼ 3070 (3100-1¼)	12140-1½ 3070 (3100-1½)	NA	

HIRL Rwy 9-27 **0**
REIL Rlys 9 and 27 **0**

SW-1, 03 DEC 2020 to 31 DEC 2020

SW-1, 03 DEC 2020 to 31 DEC 2020