

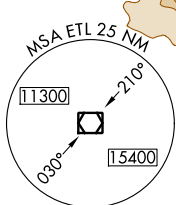
LOC RWY 9
TELLURIDE RGNL (TEX)

MISSED APPROACH: Climb to 11800 then climbing right turn to 13500 on ETL R-104 to ETL VOR/DME and hold.

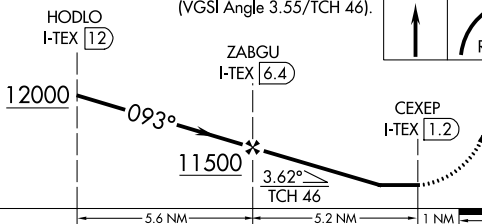
UNICOM
123.0 (CTAF)

LOCALIZER .. 109.3
I-TEX ---
Chan 30
LOC offset 3.00°

DME REQUIRED



VGSI and descent angles not coincident
(VGSI Angle 3.55/TCH 46).



ELEV 9070	D	TDZE 9037
-----------	----------	-----------

HIRL Rwy 9-27 **L**
REIL Rwys 9 and 27 **L**