

NDB ITR

209

APP CRS

139°

Rwy Idg

5199

TDZE

4218

Apt Elev

4218

NDB RWY 15

KIT CARSON COUNTY (ITR)

▼

▲

MISSED APPROACH: Climbing right turn to 7000 in ITR NDB holding pattern, continue climb-in-hold to 7000.

ASOS

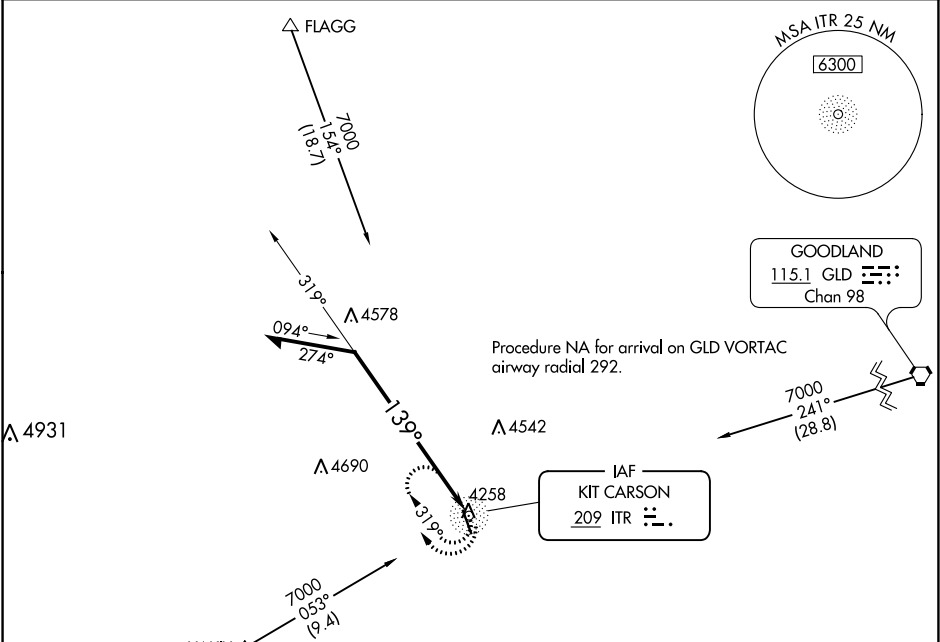
135.225

DENVER CENTER

132.7 226.675

UNICOM

122.8 (CTAF) 0



ELEV 4218

TDZE 4218

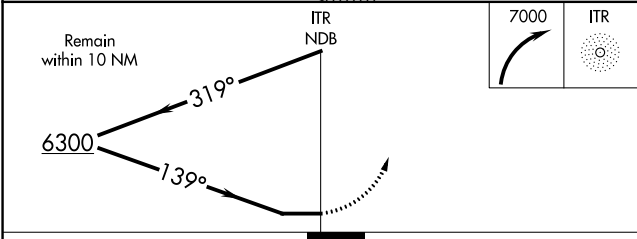
139° to NDB

5199 X 15

0.38 UP

33

COUGAR MOA



CATEGORY	A	B	C	D
S-15	4940-1	722 (800-1)	4940-2	722 (800-2)
CIRCLING	4940-1	722 (800-1)	4940-2	4940-2 1/4
			722 (800-2)	722 (800-2 1/4)

MIRL Rwy 15-33 0

REIL Rwy 15 and 33 0