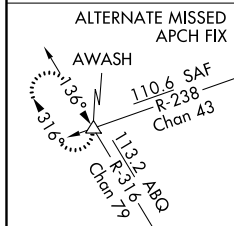
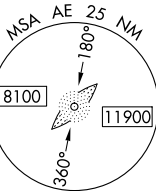
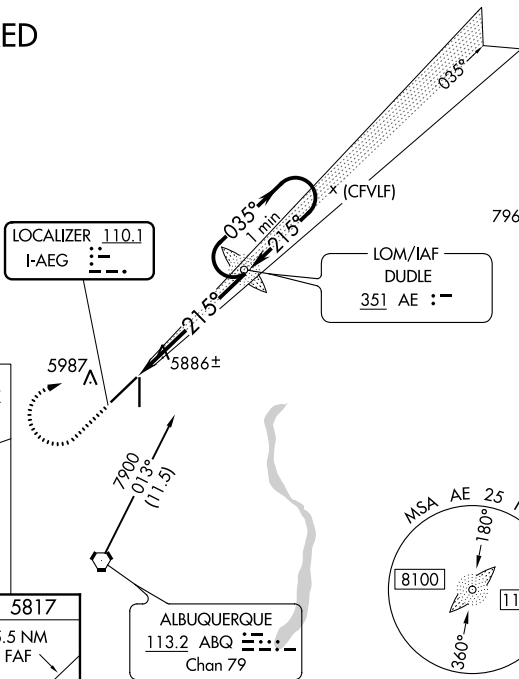


ILS or LOC RWY 22
DOUBLE EAGLE II (AEG)

MISSED APPROACH: Climb to 6500 then climbing right turn 7700 direct DUDLE LOM and hold.

AWOS-3PT 119.025	ALBUQUERQUE APP CON 127.4 253.5	DOUBLE EAGLE II TOWER ★ 120.15 (CTAF) ①	GND CON 121.625	CLNC DEL 124.8 (When twr closed)
----------------------------	---	---	---------------------------	---

△
AWASH



ELEV 5837

TDZE 5817

215° 5.5 NM from FAF

5883

TWR 5922

7398 X 100

0.4% UP

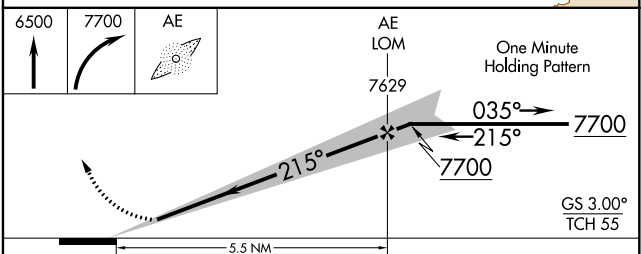
5983 X 100

35

REIL Rwy 17 and 35

MIRL Rwy 4-22 and 17-35

FAF to MAP 5.5 NM					
Knots	60	90	120	150	180
Min:Sec	5:30	3:40	2:45	2:12	1:50



CATEGORY	A	B	C	D
S-ILS 22	6017-1½ 200 (200-½)			
S-LOC 22	6140-1½ 323 (400-½)			
C CIRCLING	6400-1 563 (600-1)	6420-1½ 583 (600-1½)	6640-2½ 803 (900-2½)	

SW-1, 03 DEC 2020 to 31 DEC 2020