

WAAS
CH **93809**
W35A

APP CRS
352°

Rwy Idg
TDZE **5515**
Apt Elev **5515**

RNAV (GPS) RWY 35

COLORADO AIR AND SPACE PORT (CFO)

RNP APCH.
For uncompensated Baro-VNAV systems, LNAV/VNAV NA below -25°C or above 46°C. For inop ALS, increase LNAV/VNAV all Cats visibility to ¾ SM.

MALSR

MISSED APPROACH: Climb to 8000 direct CUDNI and on track 353° to PHLAT and hold.

ATIS
119.025

DENVER APP CON
128.25 371.95

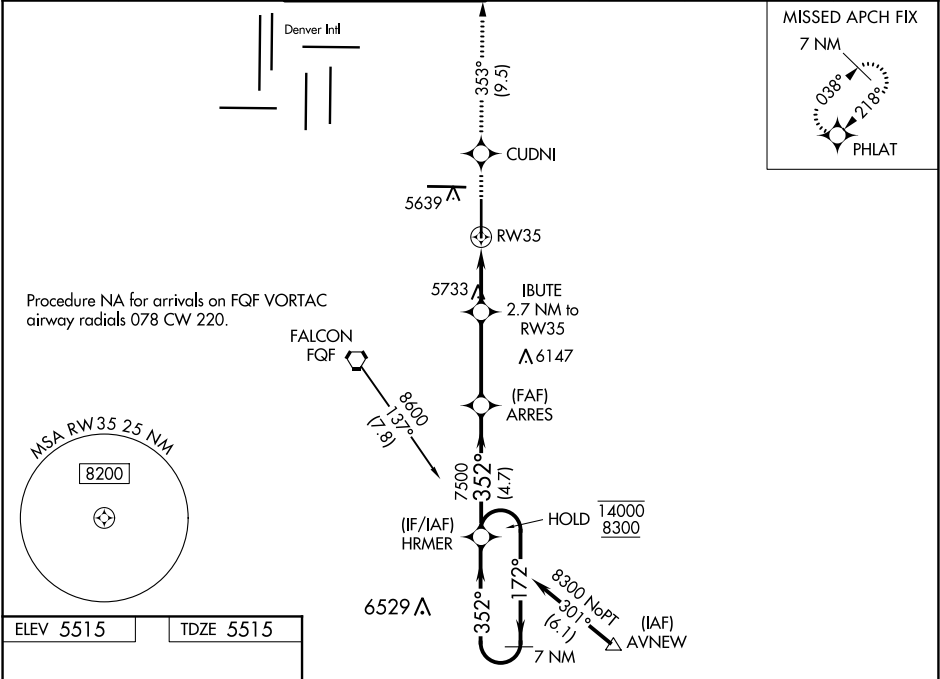
SPACE PORT TOWER ★
120.2 (CTAF) ①

GND CON
124.7

CLNC DEL
124.7

CLNC DEL
121.75
(When twr closed)

UNICOM
122.95



ELEV 5515 TDZE 5515

REIL Rwy 8 and 17 ①
HIRL Rwy 8-26 ①
MIRL Rwy 17-35 ①

352° to RW35

8000 CUDNI tr 353° PHLAT

8000	CUDNI	tr 353°	PHLAT	ARRES	HRMER	7 NM Holding Pattern
* LNAV only						
IBUTE 2.7 NM to RW35						
* 1.5 NM to RW35						
RW35 1.5 NM 1.2 NM 3.4 NM 4.7 NM						
GP 3.00° TCH 54						
CATEGORY	A	B	C	D		
LPV DA	5715-½ 200 (200-½)					
LNAV/VNAV DA	5783-½ 268 (300-½)					
LNAV MDA	6040-½ 525 (600-½)			6040-1 525 (600-1)		
CIRCLING	6040-1 525 (600-1)			6100-1½ 585 (600-1½)		6300-2½ 785 (800-2½)