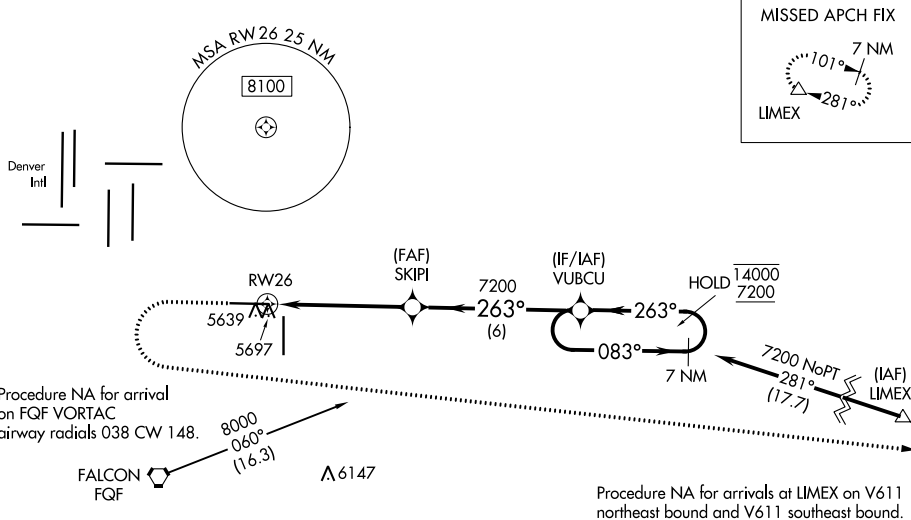
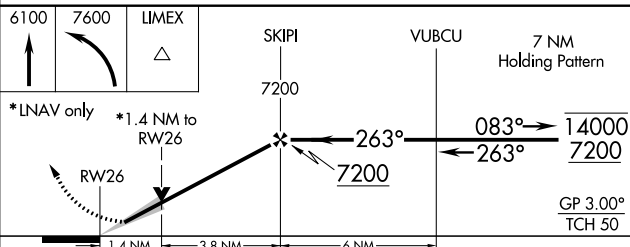



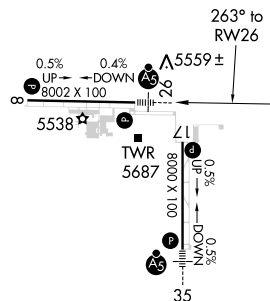
RNAV (GPS) RWY 26
COLORADO AIR AND SPACE PORT (CFO)

MISSED APPROACH: (Do not exceed 200K until LIMEX) Climb to 6100 then climbing left turn to 7600 direct LIMEX and hold.

T For uncompensated Baro-VNAV systems, LNAV/VNAV NA below
A -25°C or above 48°C. For inop ALS, increase LNAV/VNAV all Cats
visibility to 1½ SM, and increase LNAV Cat C/D visibility to 1¾ SM.

UNICOM
122.95 $\Delta 6270 \pm$ 

| CATEGORY | A | B | C | D |
|--|--------------------|---|-------------------------|-------------------------|
| LPV DA | 5689-½ 200 (200-½) | | | |
| LNAV/VNAV DA | 5858-¾ 369 (400-¾) | | | |
| LNAV MDA | 5960-½ 471 (500-½) | | 5960-1 471 (500-1) | |
|  CIRCLING | 6000-1 485 (500-1) | | 6100-1½ 585 (600-1½) | 6300-2½ 785 (800-2½) |



REIL Rwys 8 and 17 **L**
HIRL Rwy 8-26 **L**
MIRL Rwy 17-35 **L**