

WAAS
CH **82209**
W17A

APP CRS
172°

Rwy Idg
TDZE **5491**
Apt Elev **5515**

RNAV (GPS) RWY 17

COLORADO AIR AND SPACE PORT (CFO)

RNP APCH.

▼

▲

For uncompensated Baro-VNAV systems, LNAV/VNAV NA below -25°C or above 48°C.

MISSED APPROACH: Climb to 8500 direct VIBPU and on track 160° to HUNTN and hold.

ATIS
119.025

DENVER APP CON
128.25 371.95

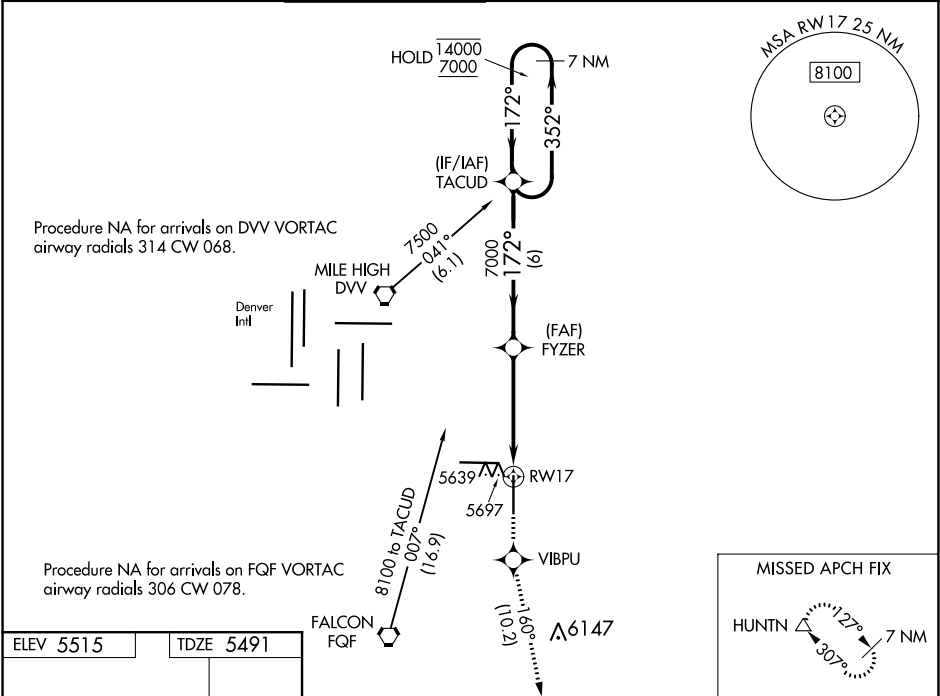
SPACE PORT TOWER ★
120.2 (CTAF) 0

GND CON
124.7

CLNC DEL
124.7

CLNC DEL
121.75
(When twr closed)

UNICOM
122.95



ELEV 5515

TDZE 5491

172° to RW17

0.5% UP 0.4% DOWN

8002 X 100

5538

Δ5559±

TWR 5687

8000 X 100

0.5% UP 0.5% DOWN

8000 X 100

35

REIL Rws 8 and 17

HIRL Rwy 8-26

MIRL Rwy 17-35

7 NM Holding Pattern		TACUD	FYZER	8500 ↑	VIBPU ✱	tr 160°	HUNTN △
14000 7000		←352° 172°→	172° 7000	*1.5 NM to RW17 *LNAV only			
GP 3.00° TCH 55		6 NM 3.1 NM 1.5 NM					
CATEGORY	A	B	C	D			
LPV DA	5691-3/4 200 (200-3/4)						
LNAV/ VNAV DA	5916-13/8 425 (500-13/8)						
LNAV MDA	6000-1	509 (500-1)	6000-1 1/2	509 (500-1 1/2)			
CIRCLING	6000-1	485 (500-1)	6100-1 1/2 585 (600-1 1/2)	6300-2 1/2 785 (800-2 1/2)			