

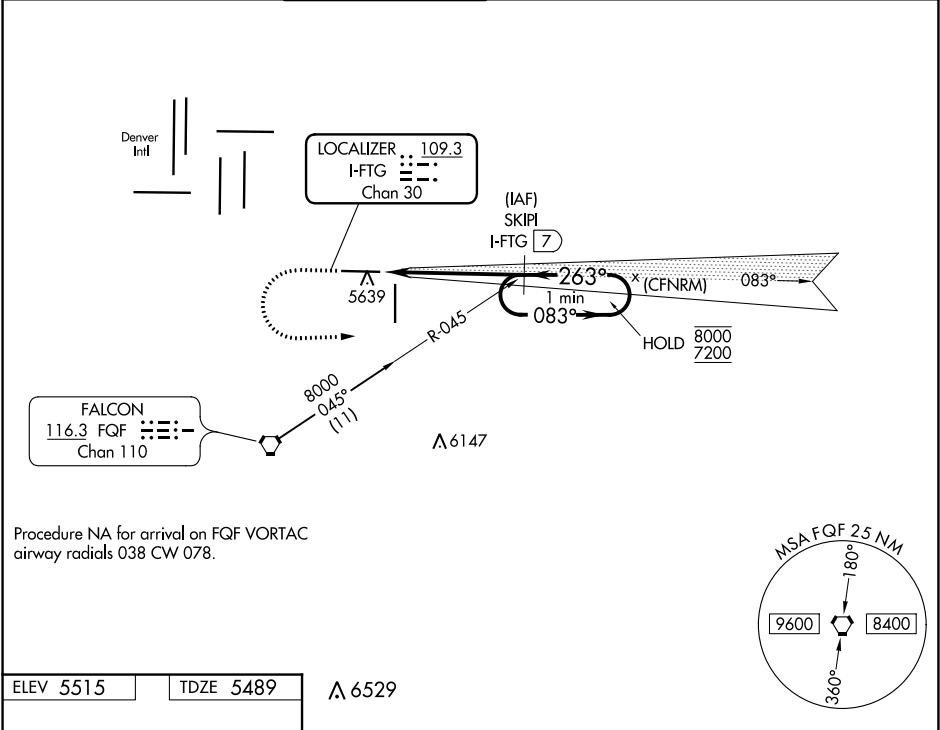


LOC/DME I-FTG <b>109.3</b> Chan <b>30</b>	APP CRS <b>263°</b>	Rwy Idg TDZE Apt Elev	<b>8002</b> <b>5489</b> <b>5515</b>
---	------------------------	-----------------------------	---

ILS or LOC RWY 26  
COLORADO AIR AND SPACE PORT (CFO)

DME required.		<div>MALSR</div> <div></div>	MISSED APPROACH: Climb to 6100 then climbing left turn to 7200 on heading 080° and on FQF VORTAC R-045 to SKIPI/I-FTG 7 DME and hold.			
<div><div><div><div></div></div><div></div></div><div>For inop ALS, increase S-LOC 26 Cat C/D visibility to 1 1/2 SM.</div></div>						
<div>ATIS</div> <div>119.025</div>	<div>DENVER APP CON</div> <div>128.25 371.95</div>	<div>SPACE PORT TOWER ★</div> <div>120.2 (CTAF) </div>	<div>GND CON</div> <div>124.7</div>	<div>CLNC DEL</div> <div>124.7</div>	<div>CLNC DEL</div> <div>121.75</div> <div>(When twr closed)</div>	<div>UNICOM</div> <div>122.95</div>



ELEV 5515

TDZE 5489

263° 5.2 NM  
from FAF

5559±

0.5%  
UP  
8002 X 100

0.4%  
DOWN

5538

5687

0.5%  
UP  
8001 X 100

0.5%  
DOWN

35

REIL Rwy 8 and 17

HIRL Rwy 8-26

MIRL Rwy 17-35

6100

7200

FQF  
R-045

SKIPI  
I-FTG  
7

SKIPI  
I-FTG  
7

7200

One Minute  
Holding Pattern

083°

263°

8000  
7200

GS 3.00°  
TCH 50

\*LOC only

\*I-FTG  
2.9

I-FTG  
1.7

1.1 NM

4.1 NM

CATEGORY	A	B	C	D
S-ILS 26	5689-½ 200 (200-½)			
S-LOC 26	5900-½ 411 (400-½)		5900-¾ 411 (400-¾)	
<div>CIRCLING</div>	6000-1 485 (500-1)		6100-1½ 585 (600-1½)	6300-2½ 785 (800-2½)