

APP CRS	Rwy Idg	7000
259°	TDZE	5537
	Apt Elev	5537

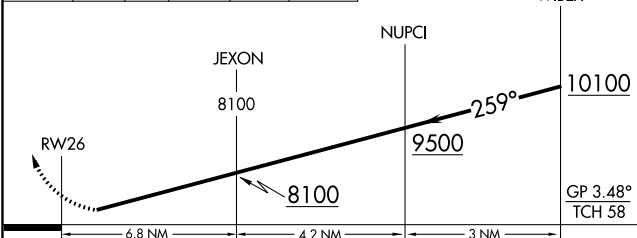
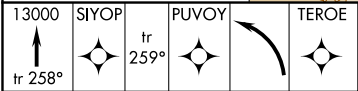
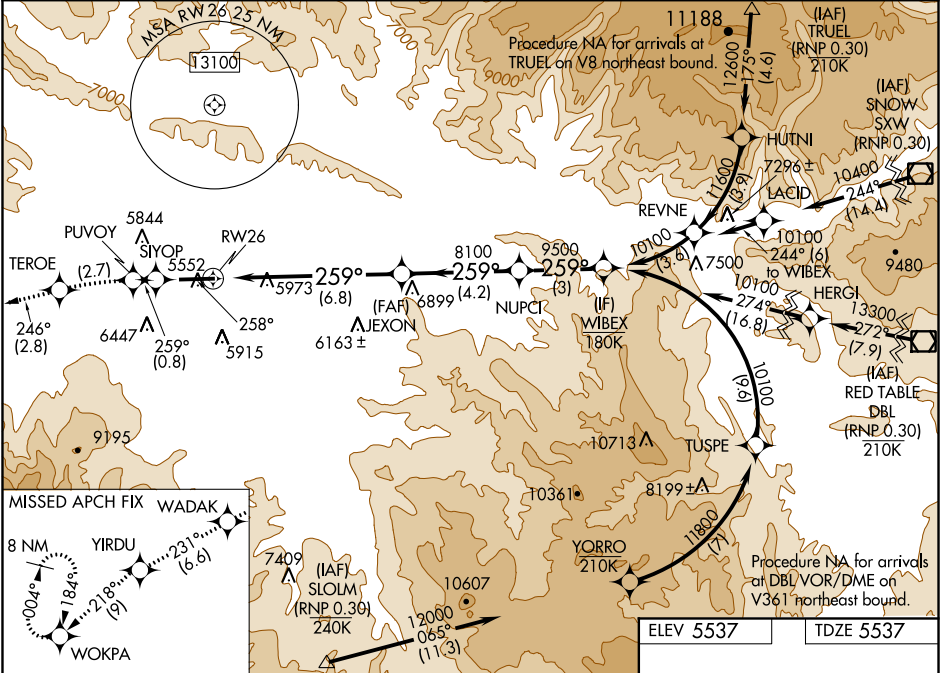
RNAV (RNP) Z RWY 26

RIFLE GARFIELD COUNTY (RIL)

When VGSi inoperative, procedure NA at night. RF required. GPS required. Missed approach requires RNP less than 1.0. For uncompensated Baro-VNAV systems, procedure NA below -24°C (-11°F) or above 38°C (100°F).
* Missed approach requires minimum climb of 398 feet per NM to 9100.

MISSED APPROACH: Climb to 13000 on track 258° to SIYOP and track 259° to PUVVOY left turn to TEROE and track 246° to WADAK and track 231° to YIRDU and track 218° to WOKPA and hold, continue climb-in-hold to 13000.

ASOS	DENVER CENTER	UNICOM
135.275	134.95 327.075	122.8 (CTAF) 0



CATEGORY	A	B	C	D
RNP 0.10 DA*	5955-1	418 (500-1)		NA
RNP 0.30 DA	6387-2 1/2	850 (900-2 1/2)		NA

AUTHORIZATION REQUIRED

