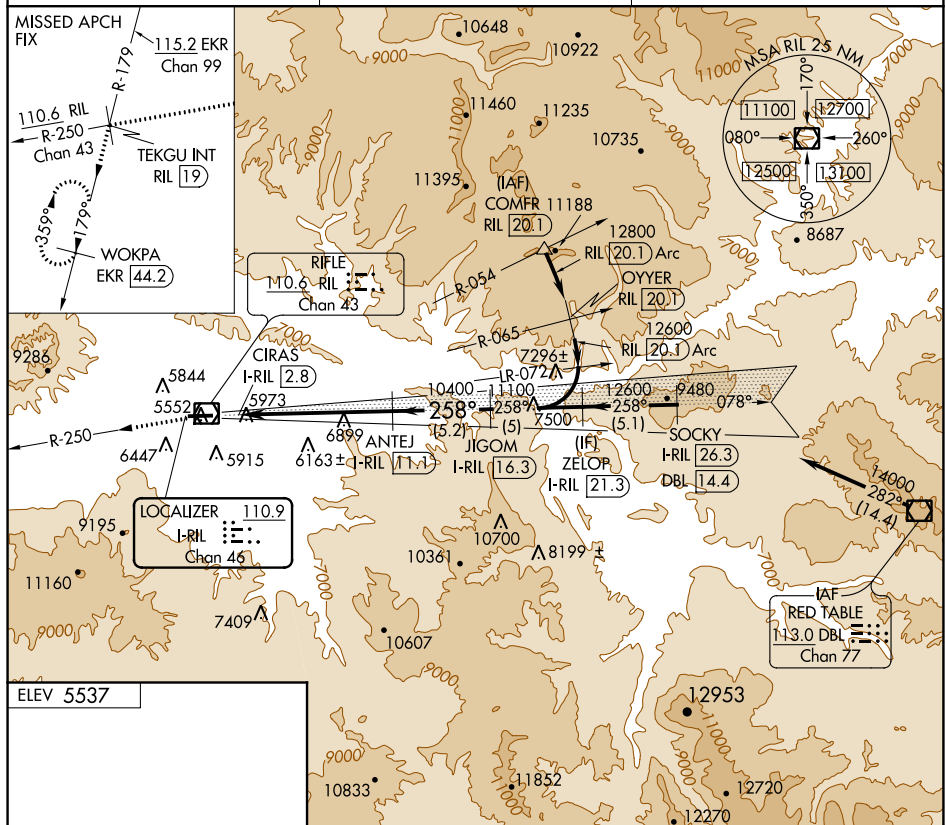


LOC/DME I-RIL <b>110.9</b> Chan <b>46</b>	APP CRS <b>258°</b>	Rwy Idg TDZE Apt Elev	<b>N/A</b> <b>N/A</b> <b>5537</b>
---	------------------------	-----------------------------	---

LOC/DME-A  
RIFLE GARFIELD COUNTY(RIL)

 	<p>Visibility reduction by helicopters NA. Use I-RIL DME when on localizer course.</p> <p>Circling NA south of Rwy 8-26 at night.</p>	<p>MISSED APPROACH: Climb to 13000 on RIL VOR/DME R-250 to TEKGU INT/RIL 19 DME and on EKR VOR/DME R-179 to WOKPA/EKR 44.2 DME and hold, continue climb-in-hold to 13000.</p>
---	---	---

ASOS <b>135.275</b>	DENVER CENTER <b>134.95 327.075</b>	UNICOM <b>122.8 (CTAF) 0</b>
------------------------	--	---------------------------------



13000  
↑  
RIL R-250

TEKGU  
INT  
RIL 19

EKR  
R-179

WOKPA  
EKR 44.2

VGSi and descent angles not coincident  
(VGSi Angle 3.60/TCH 58).

7000 X 100

1.0% UP

258° 9.8 NM  
from FAF

12600

258°

11100

10400

4.63°  
TCH 58

1.5 NM

8.3 NM

5.2 NM

5 NM

CATEGORY	A	B	C	D
<b>C</b> CIRCLING	7780-1¾	2243 (2300-1¾)	7780-3 2243 (2300-3)	NA

ANTEJ  
I-RIL 11.1

JIGOM  
I-RIL 16.3

ZELOP  
I-RIL 21.3