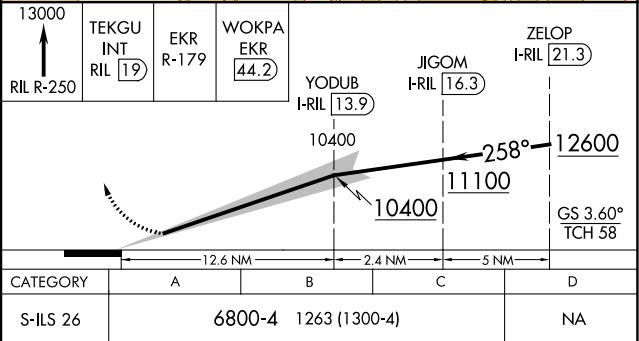
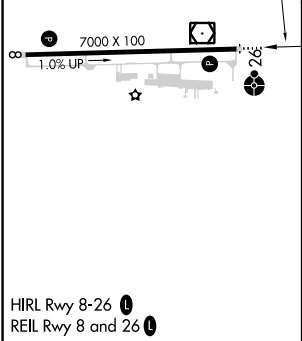
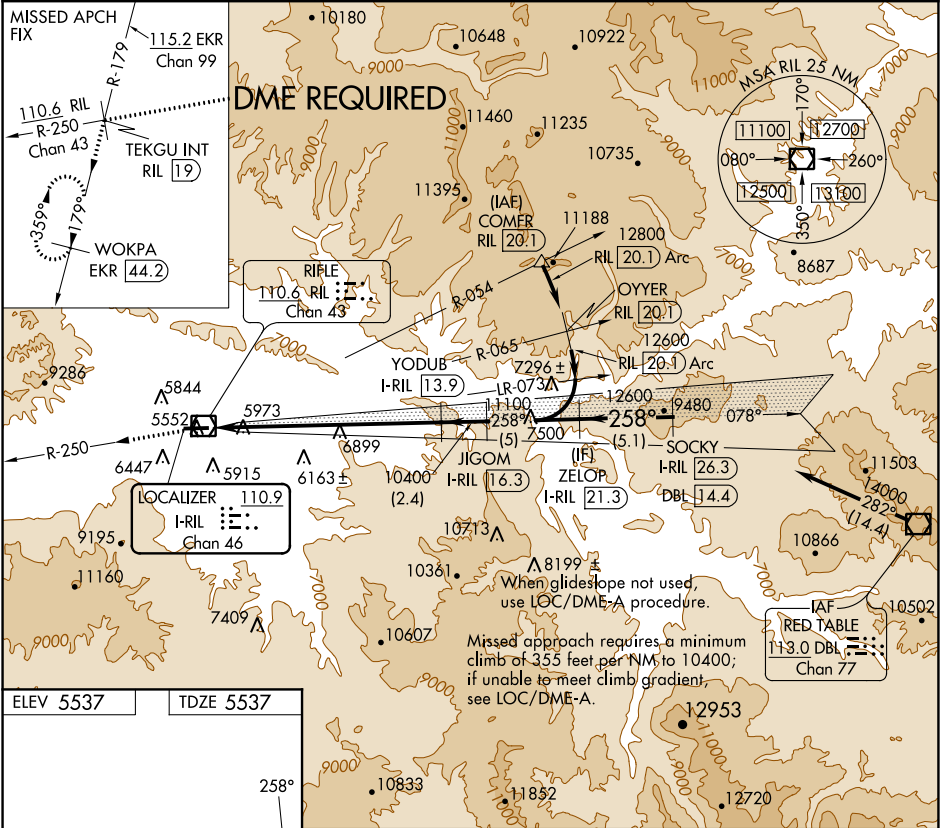


LOC/DME I-RIL 110.9 Chan 46	APP CRS 258°	Rwy Idg 7000 TDZE 5537 Apt Elev 5537
---	------------------------	---

ILS RWY 26
RIFLE GARFIELD COUNTY (RIL)

 Visibility reduction by helicopters NA. Use I-RIL DME when on localizer course. DME required. Circling not authorized.	 ODALS	MISSED APPROACH: Climb to 13000 on RIL VOR/DME R-250 to TEKGU INT/RIL 19 DME and on EKR VOR/DME R-179 to WOKPA/EKR 44.2 DME and hold.
--	-----------	---

ASOS 135.275	DENVER CENTER 134.95 327.075	UNICOM 122.8 (CTAF)
------------------------	--	-------------------------------



SW-1, 03 DEC 2020 to 31 DEC 2020

SW-1, 03 DEC 2020 to 31 DEC 2020