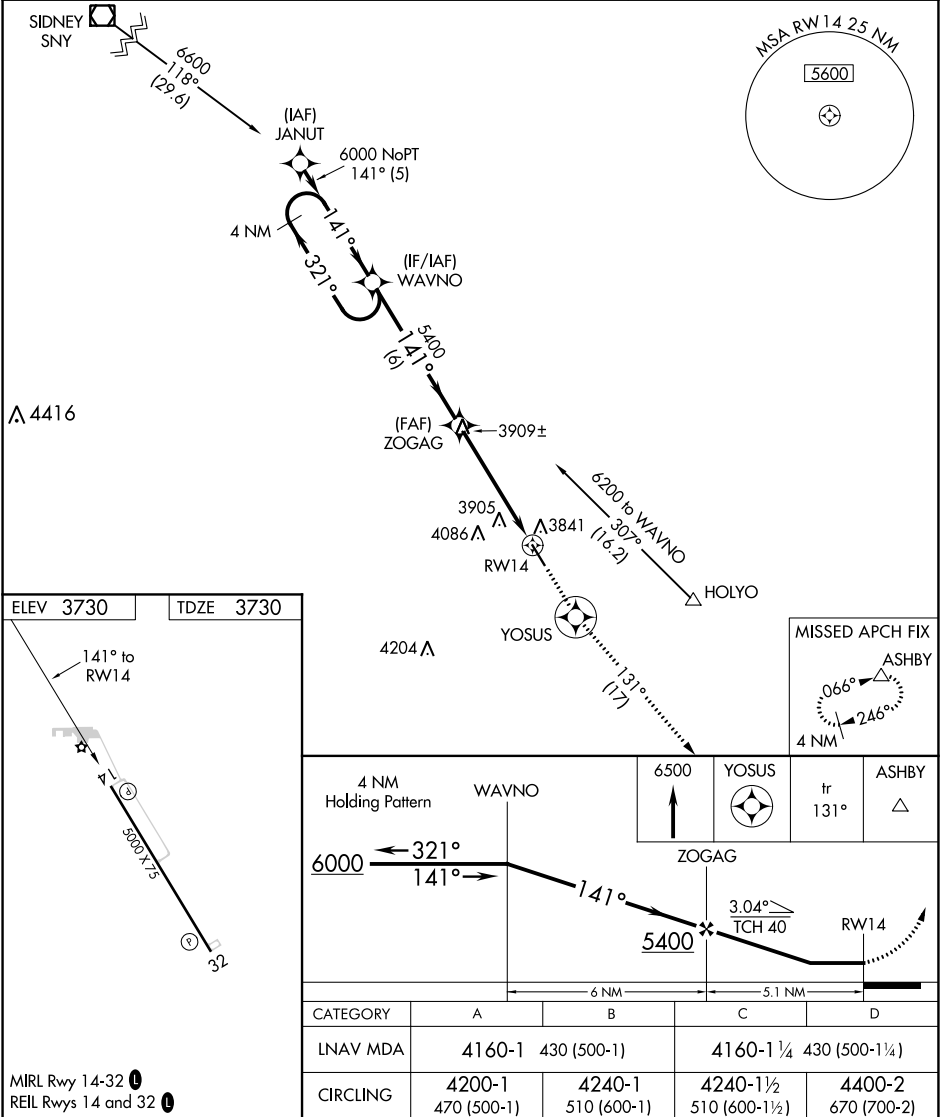


APP CRS	Rwy Idg	5000
141°	TDZE	3730
	Apt Elev	3730

RNAV (GPS) RWY 14
HOLYOKE (HEQ)

<p>NA</p> <p>Night landing: Rwy 14 NA. DME/DME RNP-0.3 NA. Helicopter visibility reduction below 1 SM NA. When local altimeter setting not received, use Sidney Muni/Lloyd W Carr Field altimeter setting and increase all MDAs 200 feet and increase LNAV Cat C/D visibility ½ mile, Circling Cat C visibility ½ mile and Circling Cat D visibility ¾ mile.</p>	<p>MISSED APPROACH: Climb to 6500 direct YOSUS and via 131° track to ASHBY and hold.</p>
---	--

AWOS-3 119.275	DENVER CENTER 118.475 225.4	UNICOM 122.7 (CTAF) 0
-------------------	--------------------------------	--------------------------



SW-1, 03 DEC 2020 to 31 DEC 2020

SW-1, 03 DEC 2020 to 31 DEC 2020