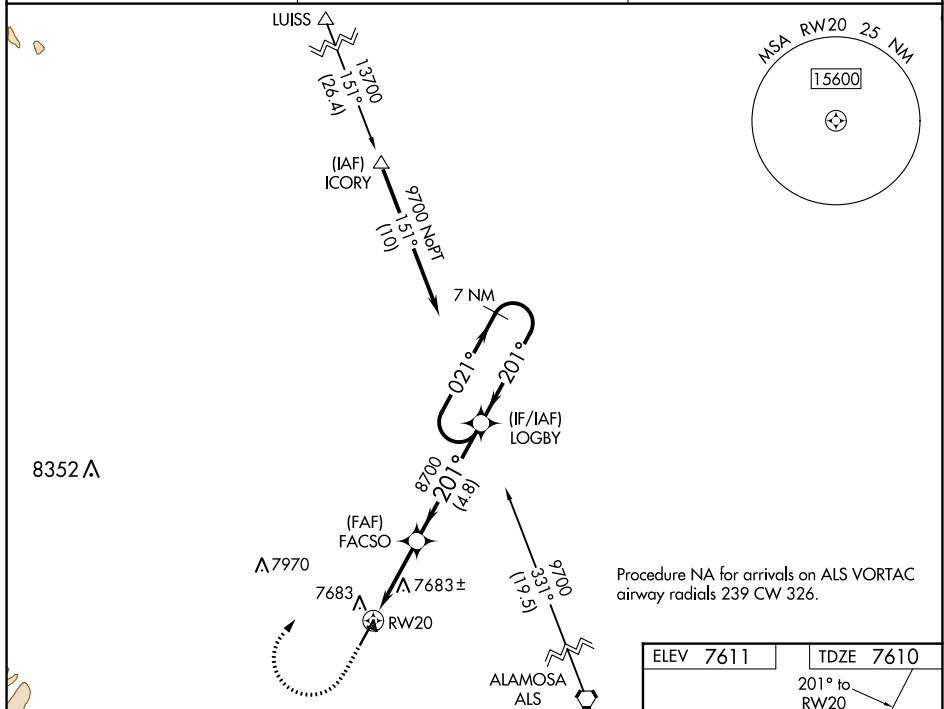


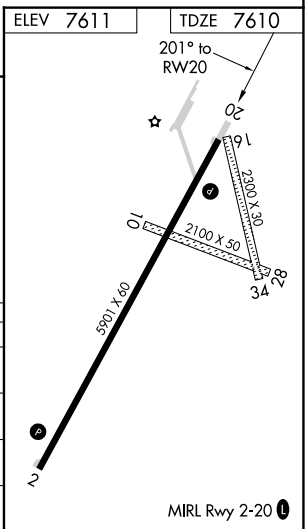
RNAV (GPS) RWY 20

MISSED APPROACH: (Do not exceed 190K until LOGBY) Climb to 8100 on heading 201° then climbing right turn to 9700 direct LOGBY and hold.

ALS AWOS-3 135.175	DENVER CENTER 128.375 379.95	UNICOM 122.8 (CTAF) ①
------------------------------	--	---------------------------------



8100 ↑ hdg 201°		9700 ↗		LOGBY 		VGS1 and RNAV glidepath not coincident (VGS1 Angle 3.00/TCH 34).					
						FACSO 8700		LOGBY		7 NM Holding Pattern	
		RW20		↘ 201°		↗ 201°		021° →		← 201° 9700	
		3.3 NM		4.8 NM						GP 3.00° TCH 52	
CATEGORY		A	B	C	D						
LPV DA		7894-1 284 (300-1)									
LNAV/ VNAV DA		7894-1 284 (300-1)									
LNAV MDA		7980-1 370 (400-1)									
CIRCLING		8060-1 449 (500-1)	8080-1 469 (500-1)	8180-1½ 569 (600-1½)	8360-2½ 749 (800-2½)						



SW-1, 03 DEC 2020 to 31 DEC 2020

SW-1, 03 DEC 2020 to 31 DEC 2020