

WAAS CH 61341 W07A	APP CRS 074°	Rwy Idg TDZE 6193 Apt Elev 6198
--	------------------------	---

RNAV (GPS) RWY 7

CRAIG-MOFFAT (CAG)

RNP APCH.

⚠

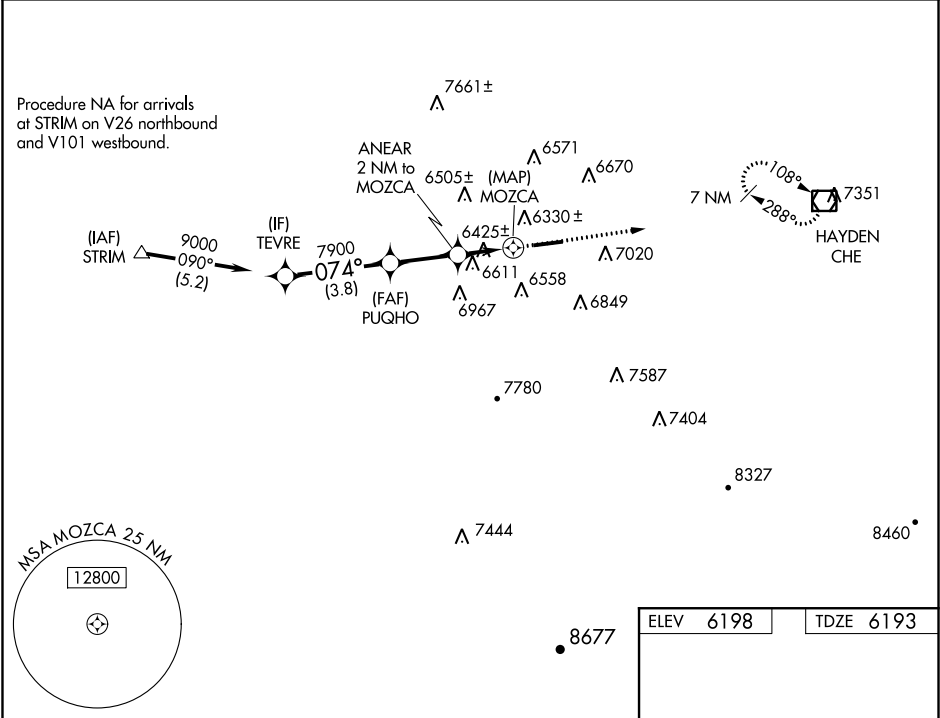
⚠

❄

Circling NA for Cat D south of Rwy 7-25.
Rwy 7 helicopter visibility reduction below ¾ SM NA.
Circling Rwy 25 NA at night.

MISSED APPROACH: Climb to 10000 direct
CHE VOR/DME and hold, continue climb-
in-hold to 10000.

ASOS 135.425	DENVER CENTER 120.475 235.975	UNICOM 122.8 (CTAF)
------------------------	---	-------------------------------



TEVRE

9000

074°

PUGHO

7900

7100

3.8 NM

2.5 NM

1 NM

1

0.8

10000

CHE

ANEAR 2 NM to MOZCA

1 NM to MOZCA

3.00° TCH 40

MOZCA

CATEGORY	A	B	C	D
LP MDA	6800-1	607 (700-1)	6800-1¾	607 (700-1¾)
LNVA MDA	6880-1	687 (700-1)	6880-2	687 (700-2)
CIRCLING	7180-1¼ 982 (1000-1¼)	7320-1½ 1122 (1200-1½)	7720-3	1522 (1600-3)

5606 X 100

25

ELEV 6198

TDZE 6193

REIL Rwys 7 and 25

MIRL Rwy 7-25