
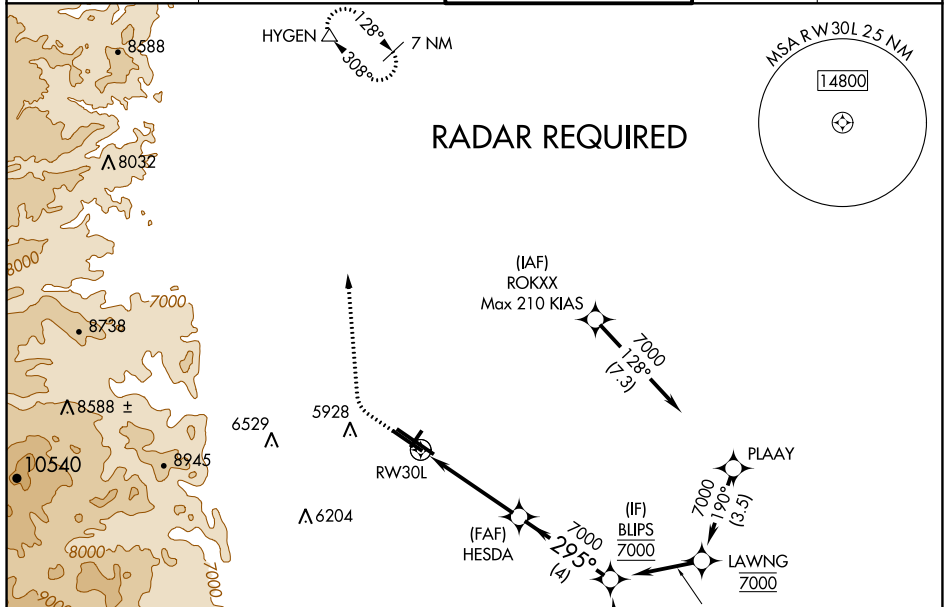


WAAS CH 42508 W30A	APP CRS 295°	Rwy Idg 7002 TDZE 5628 Apt Elev 5673
--	------------------------	---

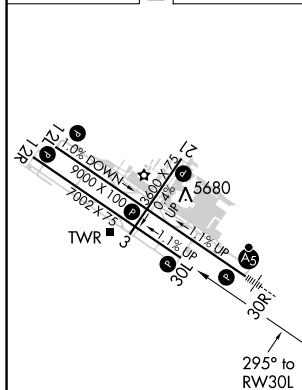
RNAV (GPS) RWY 30L
ROCKY MOUNTAIN METROPOLITAN (B.TC)

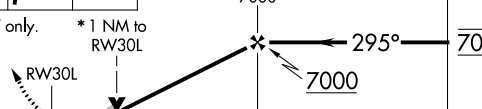
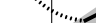
	<p>Baro-VNAV and VDP NA when using Denver Intl altimeter setting. For uncompensated Baro-VNAV systems, LNAV/VNAV NA below -26°C (-14°F) or above 47°C (116°F). DME/DME RNP-0.3 NA. When local altimeter setting not received, use Denver Intl altimeter setting and increase all DA 82 feet and all MDA 100 feet. Increase LPV all Cats, LNAV/VNAV all Cats, LNAV Cats C/D and Circling Cat C visibility ¼ mile.</p>	<p>MISSED APPROACH: Climb to 6300 then climbing right turn to 10300 direct HYGEM and hold, continue climb-in-hold to 10300.</p>
--	--	--

ATIS 126.25	DENVER APP CON 126.1 360.75	METRO TOWER ★ 118.6 (CTAF) 0 233.7	GND CON 121.7	CLNC DEL 132.6
-----------------------	---------------------------------------	--	-------------------------	--------------------------



ELEV	5673	D	TDZE	5628
------	------	----------	------	------



6300 ↑		10300 ↗		HYGEN △		HESDA 7000		BLIPS	
*LNAV only.		*1 NM to RW30L						GP 3.00° TCH 41	
		1 NM		3.3 NM		4 NM			
CATEGORY		A		B		C		D	
LPV DA		5828-3/4		200 (200-3/4)					
LNAV/ VNAV DA		5926-1 1/8		298 (300-1 1/8)					
LNAV MDA		5960-1		332 (300-1)					
C CIRCLING		6180-1 507 (600-1)		6240-1 567 (600-1)		6360-2 687 (700-2)		6860-3 1187 (1200-3)	