
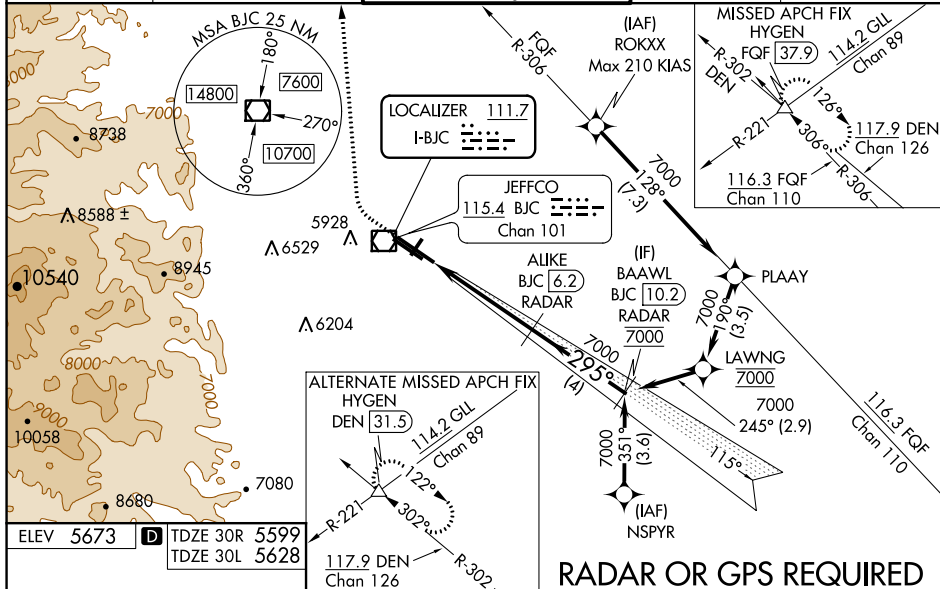


ILS or LOC RWY 30R
ROCKY MOUNTAIN METROPOLITAN (BJC)

<p>MALSR</p> 	<p>MISSED APPROACH: Climb to 6380 then climbing right turn to 10200 on heading 360° and on FQF VORTAC R-306 to HYGEN INT/FQF 37.9 DME and hold, continue climb-in-hold to 10200.</p>
--	---



RADAR OR GPS REQUIRED

ROCKY MOUNTAIN METROPOLITAN (BJC)
39°55'N-105°07'W ILS or LOC RWY 30R