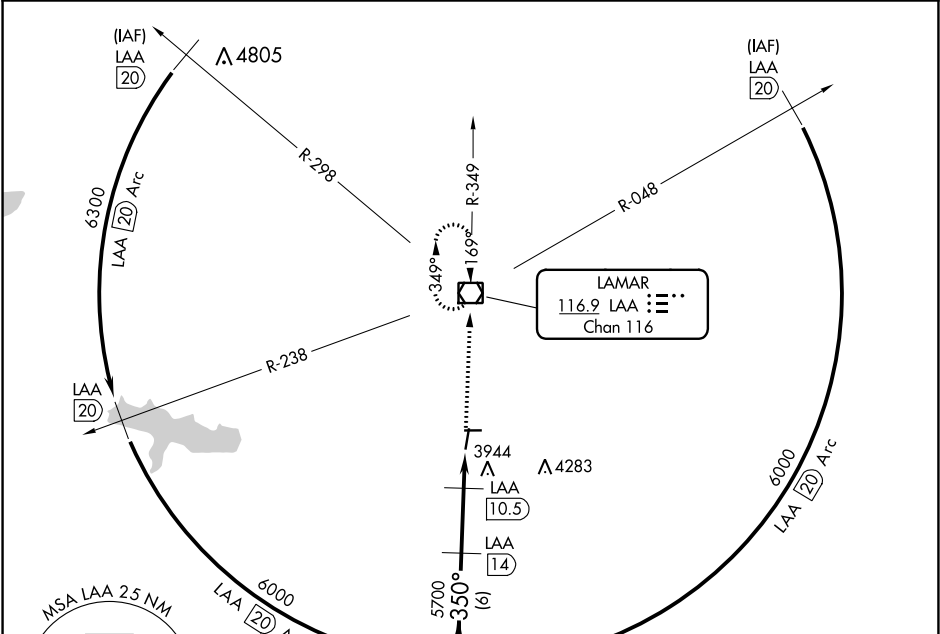


VOR/DME LAA	APP CRS	Rwy Idg	6304
116.9	350°	TDZE	3706
Chan 116		Apt Elev	3706

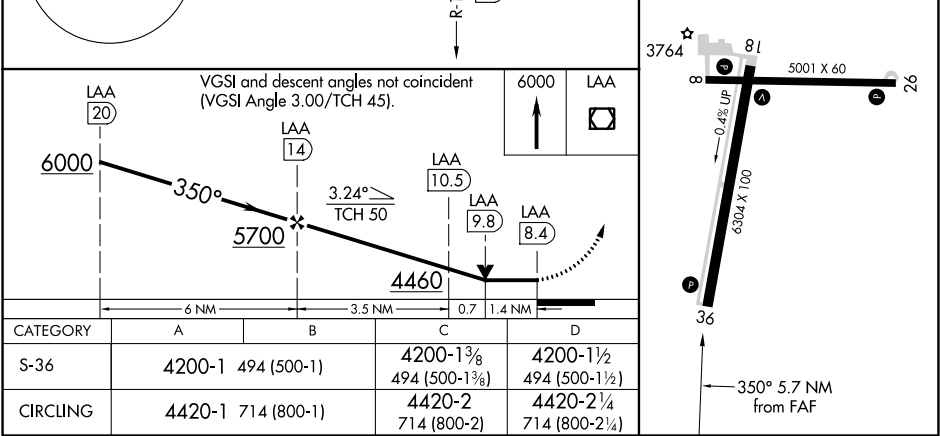
VOR RWY 36
SOUTHEAST COLORADO RGNL (LAA)

DME required.	MISSED APPROACH: Climb to 6000 direct LAA VOR/DME and hold.
<div><div></div><div></div></div> <div>Circling Rwy 8, 26 NA at night. Rwy 36 helicopter visibility reduction below ¾ SM NA.</div>	

ASOS 135.625	DENVER CENTER 133.4 377.175	UNICOM 122.8 (CTAF) 0
-----------------	--------------------------------	--------------------------



ELEV 3706	TDZE 3706
REIL Rwys 8, 26, 18, and 36 1	
MIRL Rwys 8-26 and 18-36 1	



SW-1, 03 DEC 2020 to 31 DEC 2020

SW-1, 03 DEC 2020 to 31 DEC 2020