

VOR/DME LAA	APP CRS	Rwy Idg	6304
116.9	169°	TDZE	3695
Chan 116		Apt Elev	3706

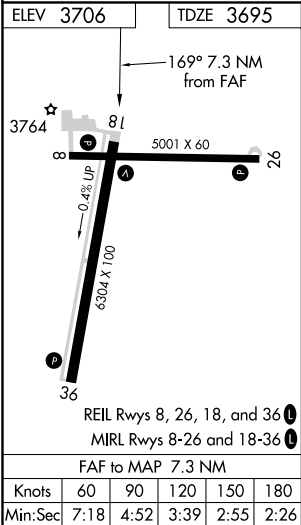
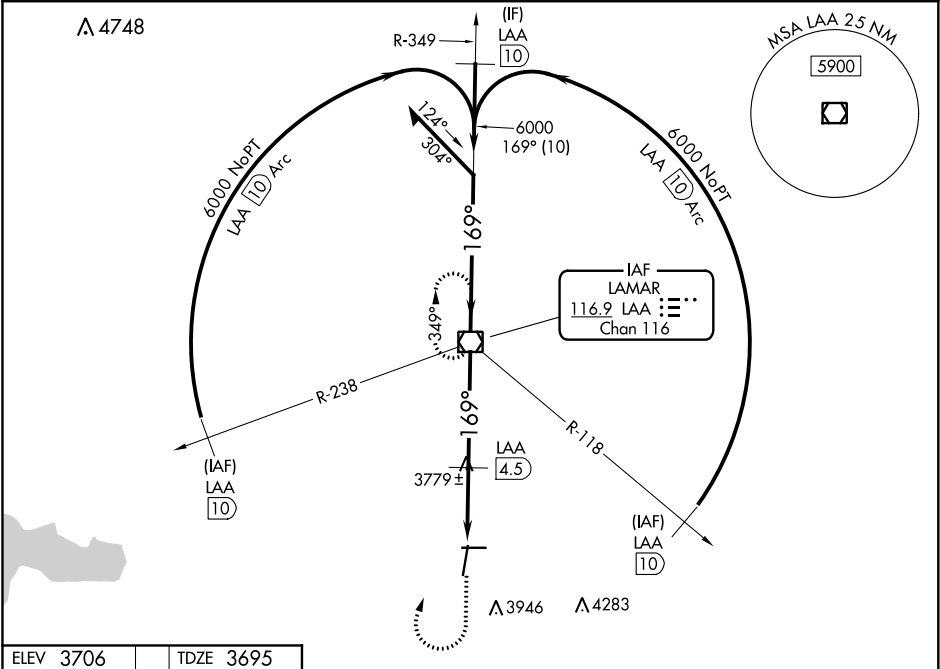
VOR RWY 18


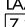
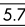
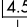
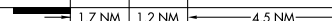
SOUTHEAST COLORADO RGNL (LAA)

Circling Rwy 8, 26 NA at night.

MISSED APPROACH: Climb to 4200 then climbing right turn to 6000 direct LAA VOR/DME and hold.

ASOS 135.625	DENVER CENTER 133.4 377.175	UNICOM 122.8 (CTAF) 0
-----------------	--------------------------------	--------------------------



4200 ↑	6000 ↗	LAA 	LAA VOR/DME				Remain within 10 NM
VGSI and descent angles not coincident (VGSI Angle 3.00/TCH 45).			≤ 2.93° TCH 41		349°		6000
LAA 7.3 	LAA 5.7 	LAA 4.5 	169°	6000	169°		6000
							
CATEGORY	A		B		C		D
S-18	4540-1 845 (900-1)		4540-1¼ 845 (900-1¼)		4540-2½ 845 (900-2½)		4540-2¾ 845 (900-2¾)
CIRCLING	4540-1¼ 834 (900-1¼)		4540-2½ 834 (900-2½)		4540-2¾ 834 (900-2¾)		
DME MINIMUMS							
S-18	4260-1 565 (600-1)				4260-1⅝ 565 (600-1⅝)		4260-1¾ 565 (600-1¾)
CIRCLING	4420-1 714 (800-1)				4420-2 714 (800-2)		4420-2¼ 714 (800-2¼)