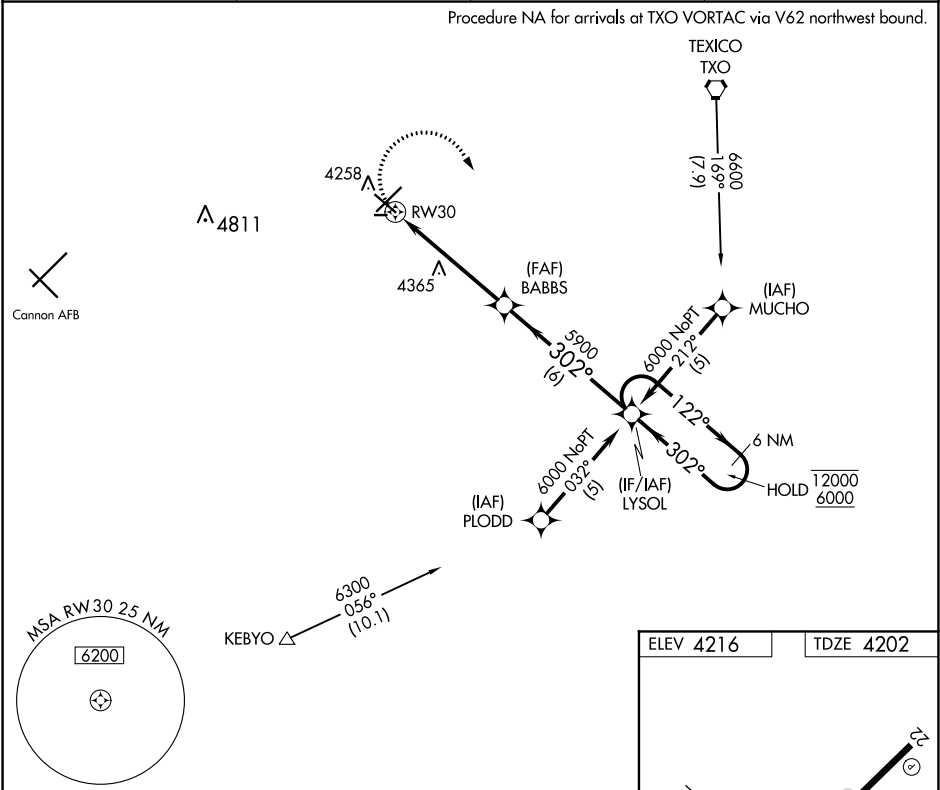






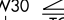

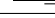


APP CRS	Rwy Idg	5697
302°	TDZE	4202
	Apt Elev	4216

RNAV (GPS) RWY 30

CLOVIS MUNI (CVN)

RNP APCH.		MISSED APPROACH: Climbing right turn to 6000 direct LYSOL and hold.	
CAUTION: Cannon AFB 12 NM WSW, heavy USAF fighter traffic.			
AWOS-3PT	CANNON APP CON	CLNC DEL	UNICOM
135.375	118.425 352.1	119.0	122.8 (CTAF) 0



<div><div>6000</div><div></div></div>		<div><div>LYSOL</div><div></div></div>		<div><div>VGSI and descent angles not coincident (VGSI Angle 3.00/TCH 75)</div></div>	
<div><div></div><div><div>RW30</div><div></div></div></div>		<div><div><div>1.1 NM to RW30</div><div></div><div>3.05°</div><div>TCH 50</div></div></div>		<div><div><div>BABBS</div><div></div><div>5900</div></div></div>	
<div><div></div><div>1.1 NM</div></div>		<div><div></div><div>4 NM</div></div>		<div><div></div><div>6 NM</div></div>	
CATEGORY		A		B	
LNAV MDA		4620-1 418 (500-1)		4620-1¼ 418 (500-1¼)	
C CIRCLING		4680-1 464 (500-1)		4700-1½ 484 (500-1½) 4820-2 604 (700-2)	

