

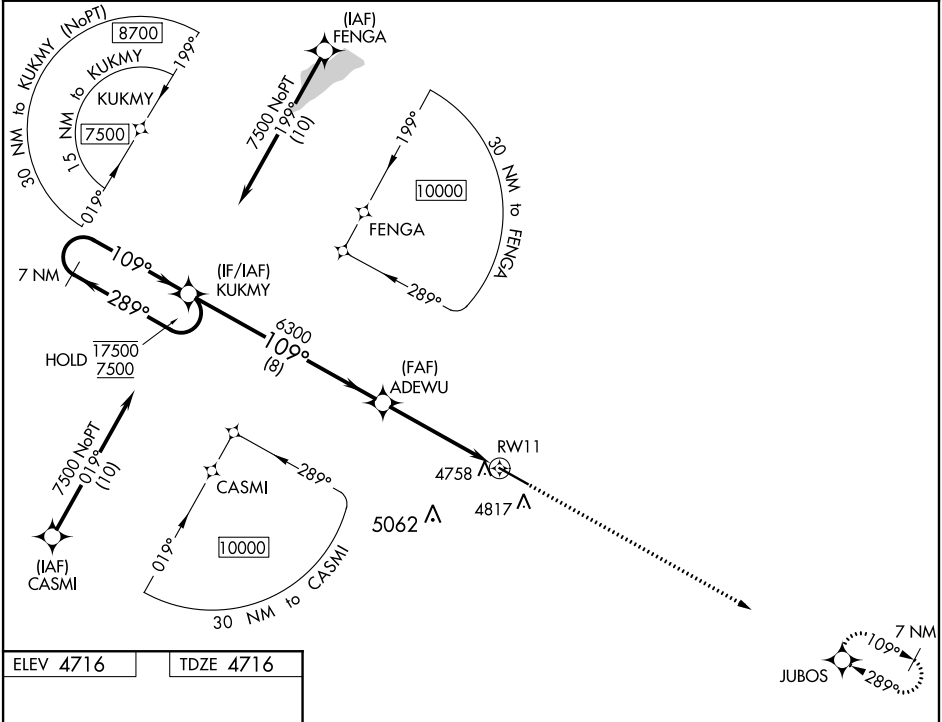
WAAS CH <b>82340</b> <b>W11A</b>	APP CRS <b>109°</b>	Rwy Idg TDZE <b>4716</b> Apt Elev <b>4716</b>
--	------------------------	---

RNAV (GPS) RWY 11

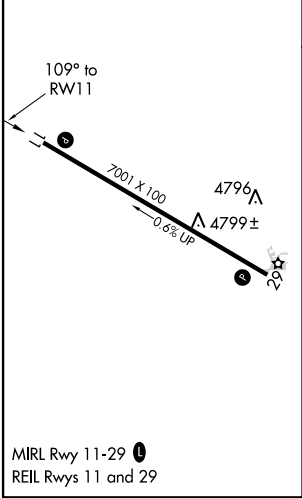
COLORADO PLAINS RGNL (AKO)

RNP APCH	MISSED APPROACH: Climb to 7500 direct JUBOS and hold.
▼ Rwy 11 helicopter visibility reduction below ¾ SM NA. ▲ For uncompensated Baro-VNAV systems, LNAV/VNAV NA below -22°C or above 54°C.	

ASOS <b>135.475</b>	DENVER CENTER <b>133.95 317.55</b>	UNICOM <b>122.8 (CTAF) 0</b>
------------------------	---------------------------------------	---------------------------------



ELEV 4716	TDZE 4716
-----------	-----------



<div>7 NM Holding Pattern</div> <div><div>17500</div><div>7500</div><div>GP 3.00° TCH 54</div></div>		<div>VGSI and RNAV glidepath not coincident (VGSI Angle 3.00/TCH 44).</div>			<div>7500</div> <div>↑</div>	<div>JUBOS</div> <div>✦</div>
		<div>KUKMY</div>				
		<div>ADEWU</div> <div>6300</div>				
		<div>6300</div>				
		<div>289°</div> <div>109°</div> <div>109°</div>			<div>*LNAV only</div>	
		<div>8 NM</div> <div>4 NM</div> <div>0.8</div>			<div>*0.8 NM to RW11</div> <div>RW11</div>	
CATEGORY		A	B	C	D	
LPV DA		4966-1 250 (300-1)				
LNAV/VNAV DA		4966-1 250 (300-1)				
LNAV MDA		5020-1 304 (400-1)				
CIRCLING		5140-1 424 (500-1)	5260-1 544 (600-1)	5420-2 704 (800-2)	5420-2¼ 704 (800-2¼)	