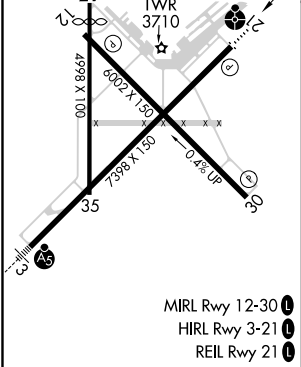
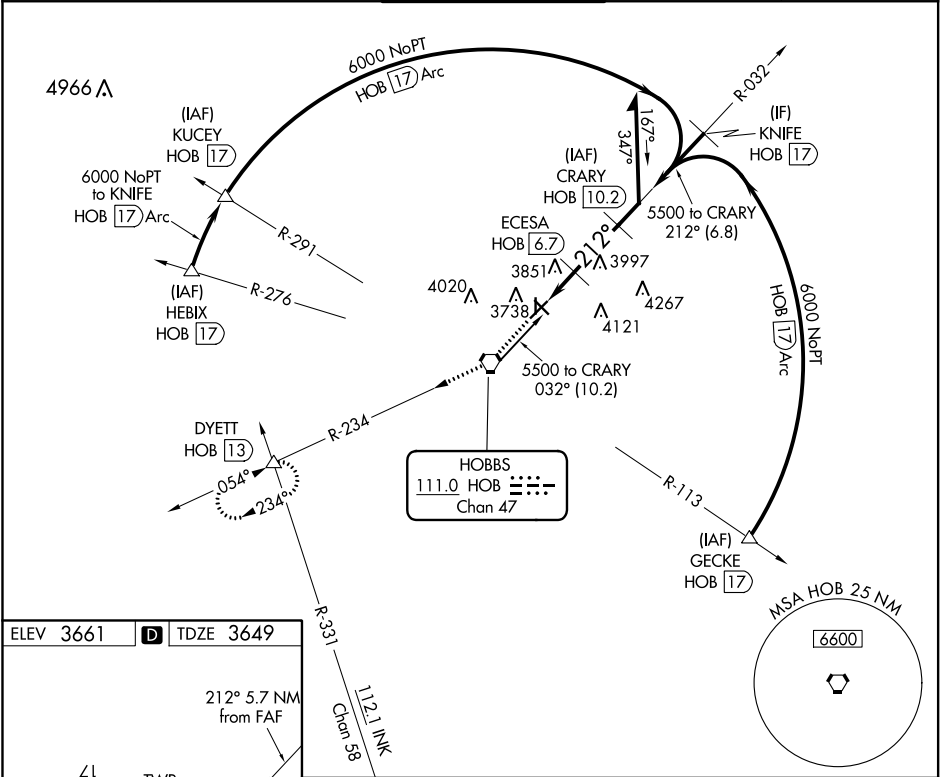


| | | |
|--|------------------------|--|
| VORTAC HOB 111.0 Chan 47 | APP CRS 212° | Rwy Idg TDZE Apt Elev 7398 3649 3661 |
|--|------------------------|--|

VOR or TACAN RWY 21
LEA COUNTY RGNL (HOB)

| | | |
|---|-------|--|
| DME required for procedure entry. DME required. | ODALS | MISSED APPROACH: Climb to 6000 direct HOB VORTAC then via HOB VORTAC R-234 to DYETT INT/HOB 13 DME and hold. |
| Circling Rwy 17 NA at night. Rwy 17 helicopter visibility reduction below 1 SM NA. | | |

| | | | | |
|-----------------------|--|--|-------------------------|-------------------------|
| ATIS 119.75 | FORT WORTH CENTER 133.1 298.95 | HOBBS TOWER★ 120.65 (CTAF) 0 317.4 | GND CON 121.9 | UNICOM 122.95 |
|-----------------------|--|--|-------------------------|-------------------------|



| | | |
|----------------------|---|-----------|
| ELEV 3661 | D | TDZE 3649 |
| 212° 5.7 NM from FAF | | |
| 4998 X 100 | | |
| 6002 X 150 | | |
| 7598 X 150 | | |
| 0.4% UP | | |
| 35 | | |
| 3 | | |
| AG | | |
| MIRL Rwy 12-30 | | |
| HIRL Rwy 3-21 | | |
| REIL Rwy 21 | | |

SW-1, 03 DEC 2020 to 31 DEC 2020

SW-1, 03 DEC 2020 to 31 DEC 2020