

APP CRS
078°

Rwy Idg	6802
TDZE	5386
Apt Elev	5446

RNAV (GPS) RWY 8

GRANT COUNTY (SVC)

RNP APCH.

T If local altimeter setting not received, procedure NA.
Rwy 8 helicopter visibility reduction below $\frac{3}{4}$ SM NA.

MISSED APPROACH: Climb to 10000 direct VIDLE and right turn via 198° track to CITUR and via 212° track to KUNRE and hold.

AWOS-3

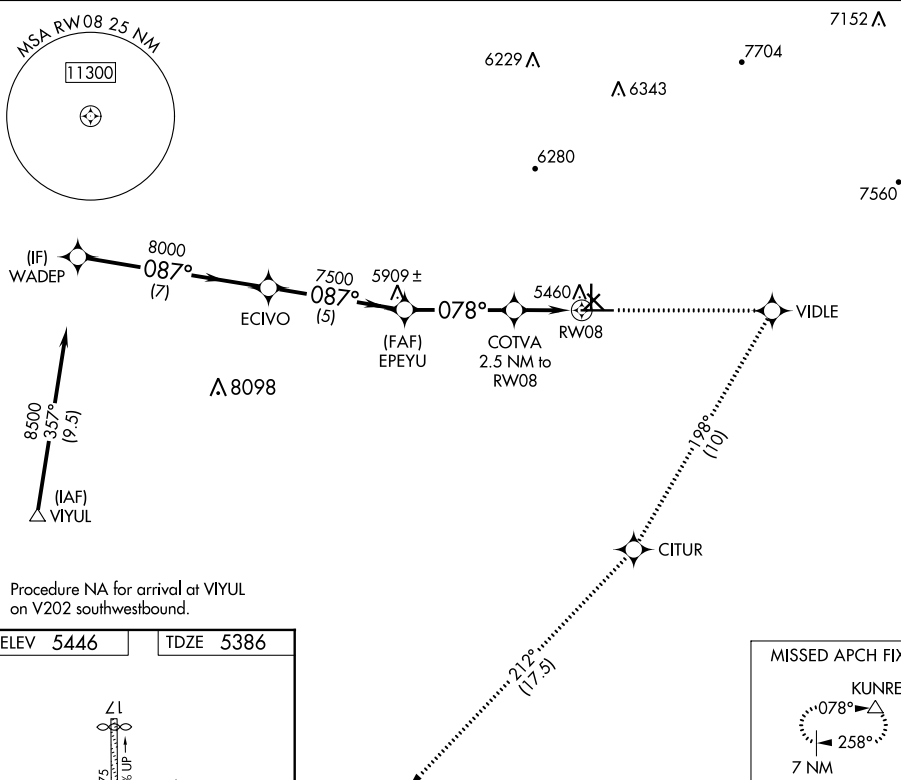
126.725

ALBUQUERQUE CENTER

134,45 327,15

UNICOM

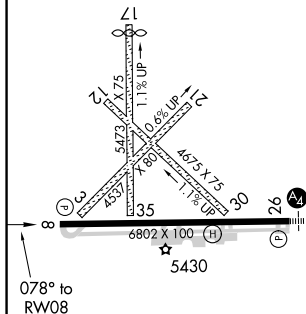
122.8 (CTAF) L



Procedure NA for arrival at VIYUL
on V202 southwestbound.

ELEV 5446

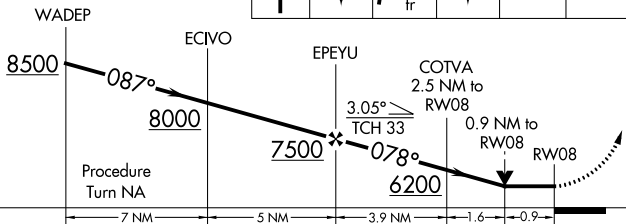
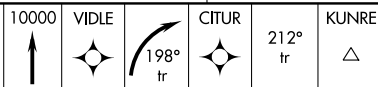
TDZE 5386



REIL Rwy 8

MIRL Rwy 8-26 **L**

VGSI and descent angles
not coincident
(VGSI Angle 3.00/TCH 44).



CATEGORY

A

B

C

D

INAV MDA

5700-1 314 (300-1)