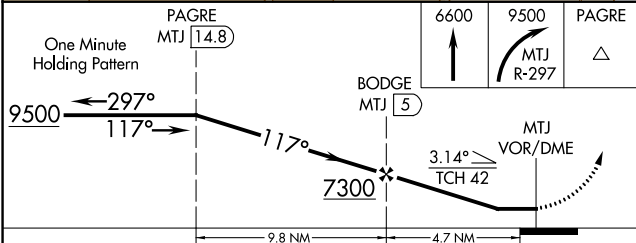
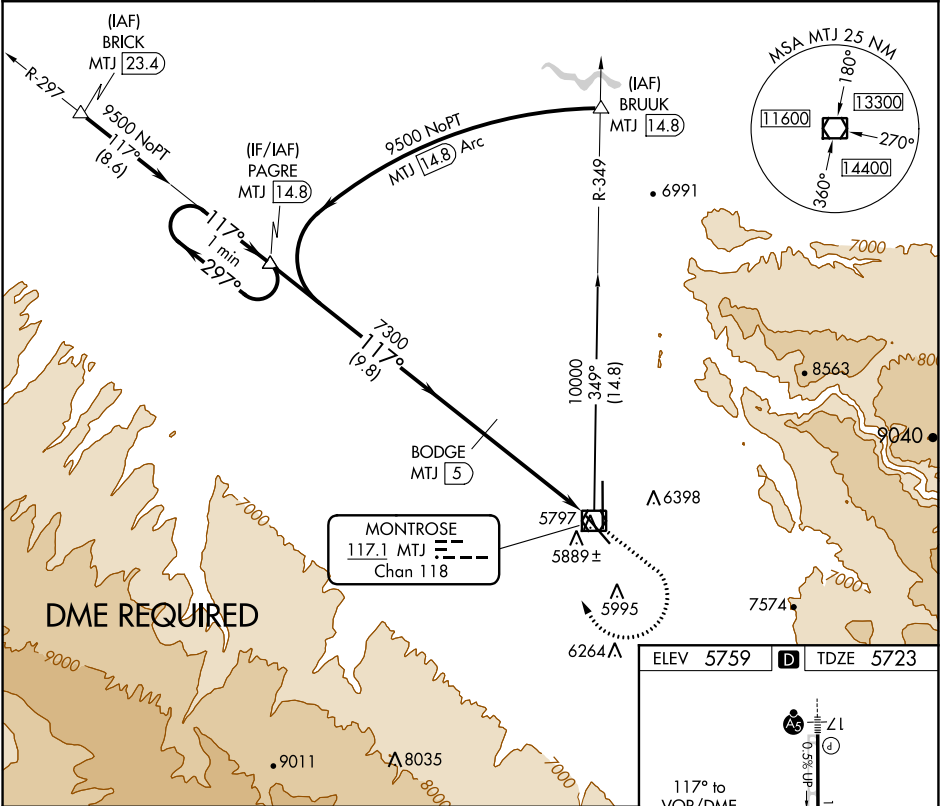


VOR/DME MTJ	APP CRS	Rwy Idg	7510
117.1	117°	TDZE	5723
Chan 118		Apt Elev	5759

VOR RWY 13 MONTROSE RGNL (MTJ)

<p>⚠ Helicopter visibility reduction below 1 SM NA. Night landing: Rwy 13 operational VGSi required, remain on or above VGSi glidepath until threshold. Night landing Rwy 31 NA. DME required.</p>	<p>MISSED APPROACH: Climb to 6600 then climbing right turn to 9500 on MTJ VOR/DME R-297 to PAGRE/14.8 DME and hold.</p>
--	---

ASOS 135.225	DENVER CENTER 127.1 343.65	UNICOM 122.8 (CTAF) 0
-----------------	-------------------------------	--------------------------



CATEGORY	A	B	C	D
S-13	6140-1	421 (400-1)	6140-1¼	421 (400-1¼)
CIRCLING	6260-1 501 (600-1)	6420-1 661 (700-1)	6640-2¾ 881 (900-2¾)	6700-3 941 (1000-3)

